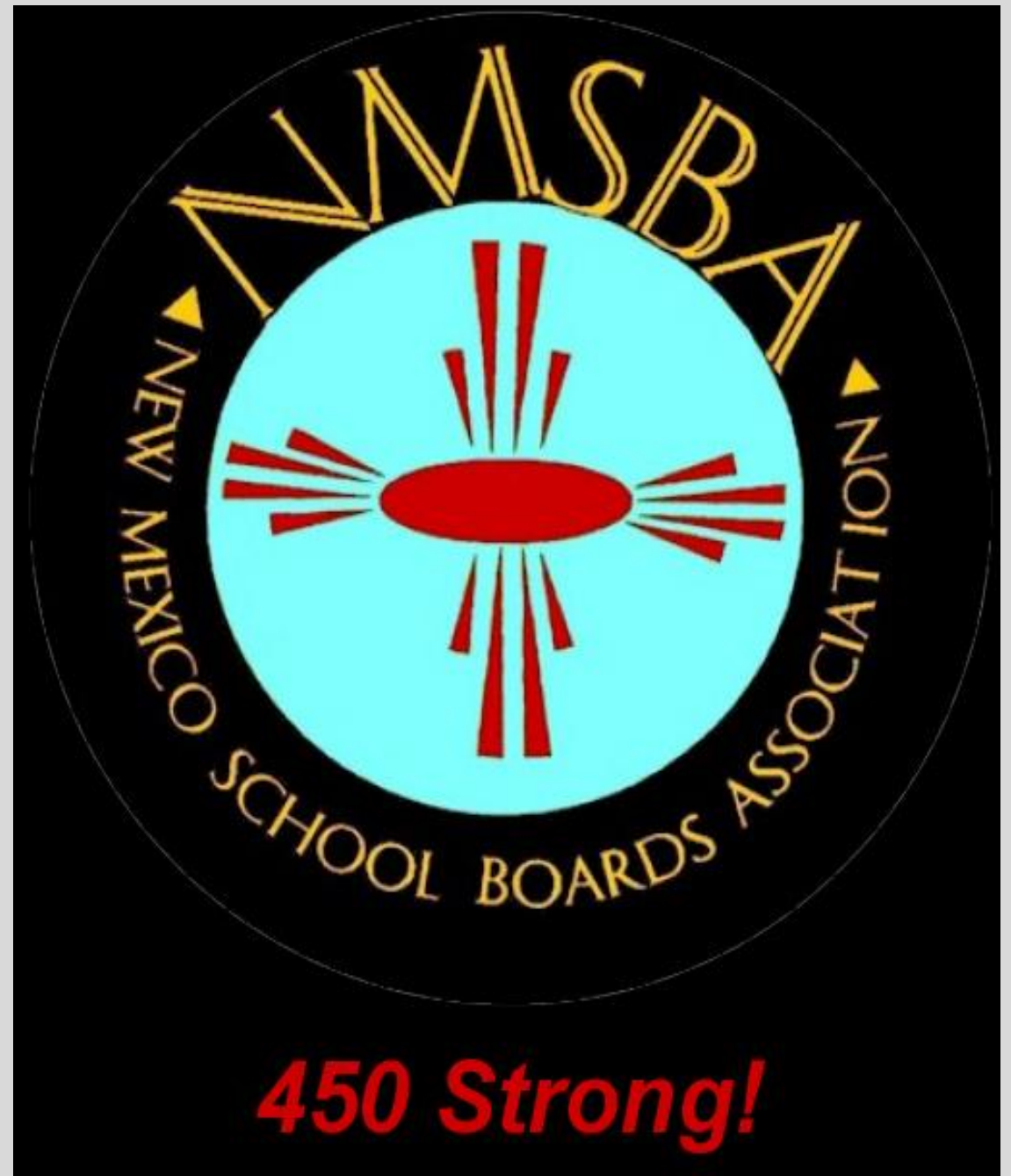


2021 Leadership  
Retreat  
July 8-10, 2021

---

Sagebrush Inn  
Taos, NM



# ***New Mexico's Greatest Export***

Saturday, July 10, 2021

11:00 a.m. – 12:00 noon

by

Billie G. Mathews, PhD

Promotes Learning, LLC

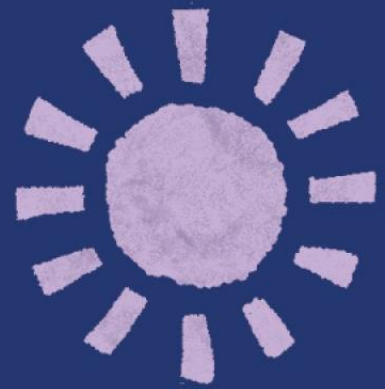




HOW

are

You?



**SHOOT  
OUT!**

Sister  
Aunt Doctorate  
Mom bilingual  
Grandma  
educator music  
elementary  
Friend  
K-12 Master's college  
facilitator  
gifted Cousin









# PARKING LOT

What about other clients in the category?

How many more will we need to do?

When do we need to reserve the venue?

Can we really do that by second quarter?

How much will it cost?

How many can be ordered in bulk?

Can we get the art approved?

Does the client need permission to use their slogan?

Who else could partner on this event?

**New Mexico's Greatest Export**

# Export (according to Merriam-Webster)

noun

ex·port | \ 'ek-,spɔrt \

Definition of export

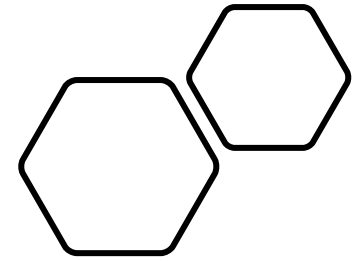
1: something exported

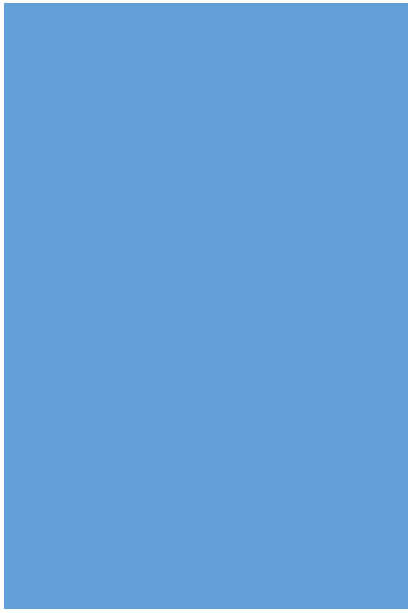
specifically : a commodity conveyed from one country or region to another for purposes of trade

2: the act of exporting : EXPORTATION

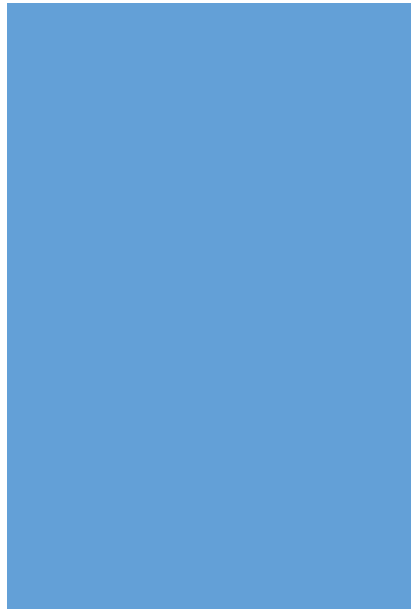
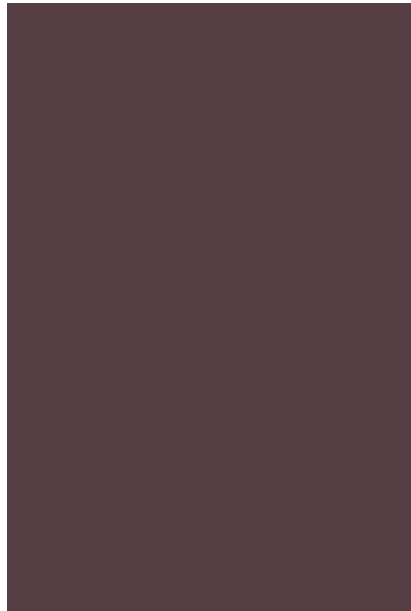
the export of wheat













**Gifted &  
Talented**

# The Nation's greatest resource...



**—United States Congress 1972  
(P.L. 95-561, Title IX, Part A,  
Section 901)**

from

Gifted Education in New Mexico Technical  
Assistance Manual 2019, p. 13.

# What is YOUR Definition?

---



*Gifted &  
Talented*

# What is Giftedness?

...according to National Association for Gifted (NAGC)

Students with gifts and talents [who] perform...

- at higher levels compared to others of the same age, experience...
- and need modification(s) ...in order to learn and realize their potential

# Who are (the) Gifted?

Students who...

- come from all racial, ethnic, cultural populations, economic backgrounds
- need access to learning opportunities to realize their potential.
- sometimes have learning and processing disorders
- need support to develop socially and emotionally

[What is Giftedness? | National Association for Gifted Children \(nagc.org\)](https://www.nagc.org/what-is-giftedness)

# What Gifted is Not...

...students who

- always finish their work early
- need a greater volume of work
- are confident
- are outgoing

# Common Misconceptions...

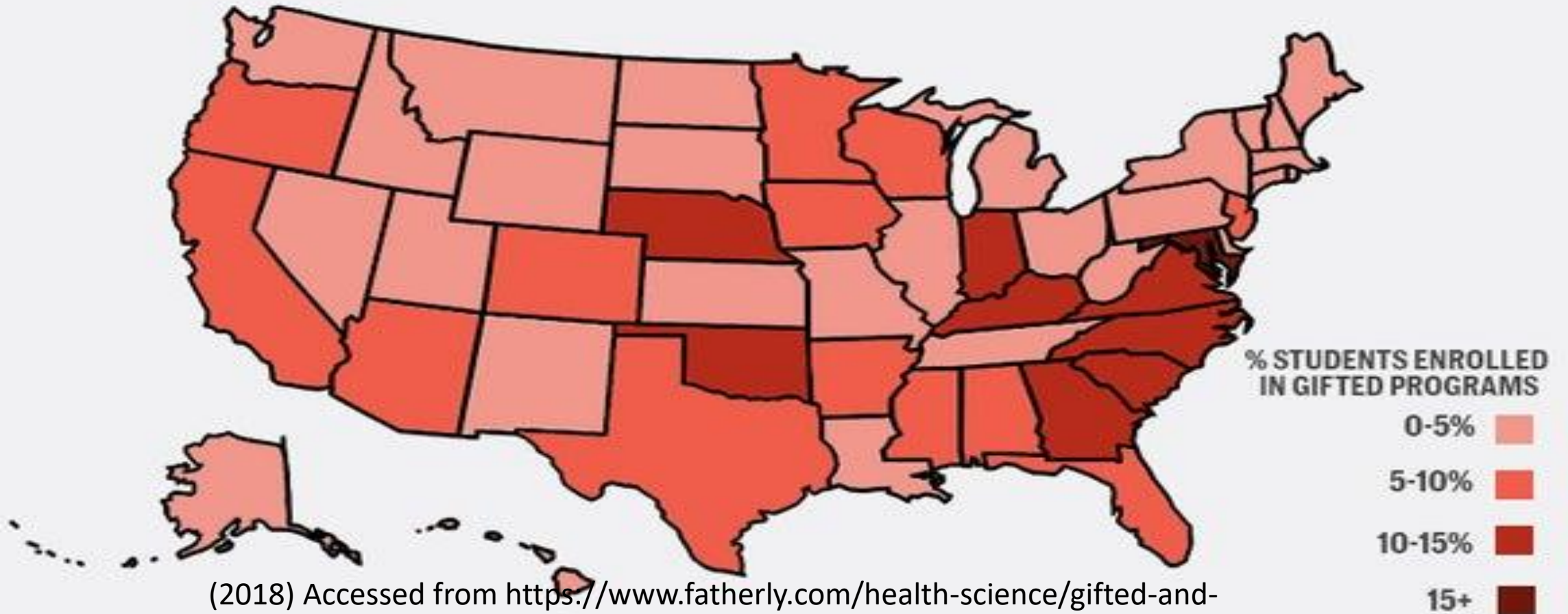
## Students who are gifted...

- can make it on their own
- should get all "A's" on their report cards
- are organized and always turn work in on time



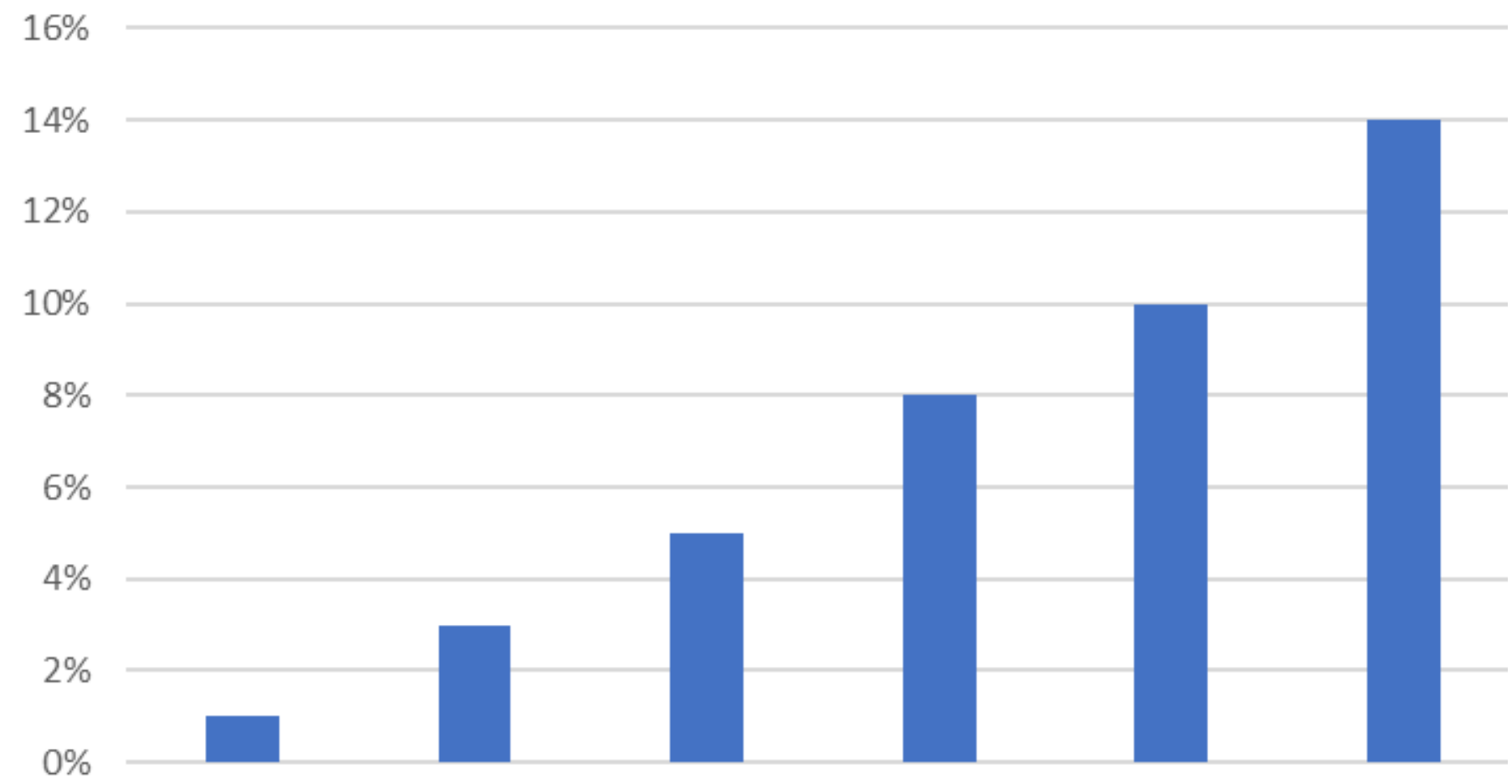
## HOW MANY GIFTED STUDENTS ARE IN YOUR STATE?

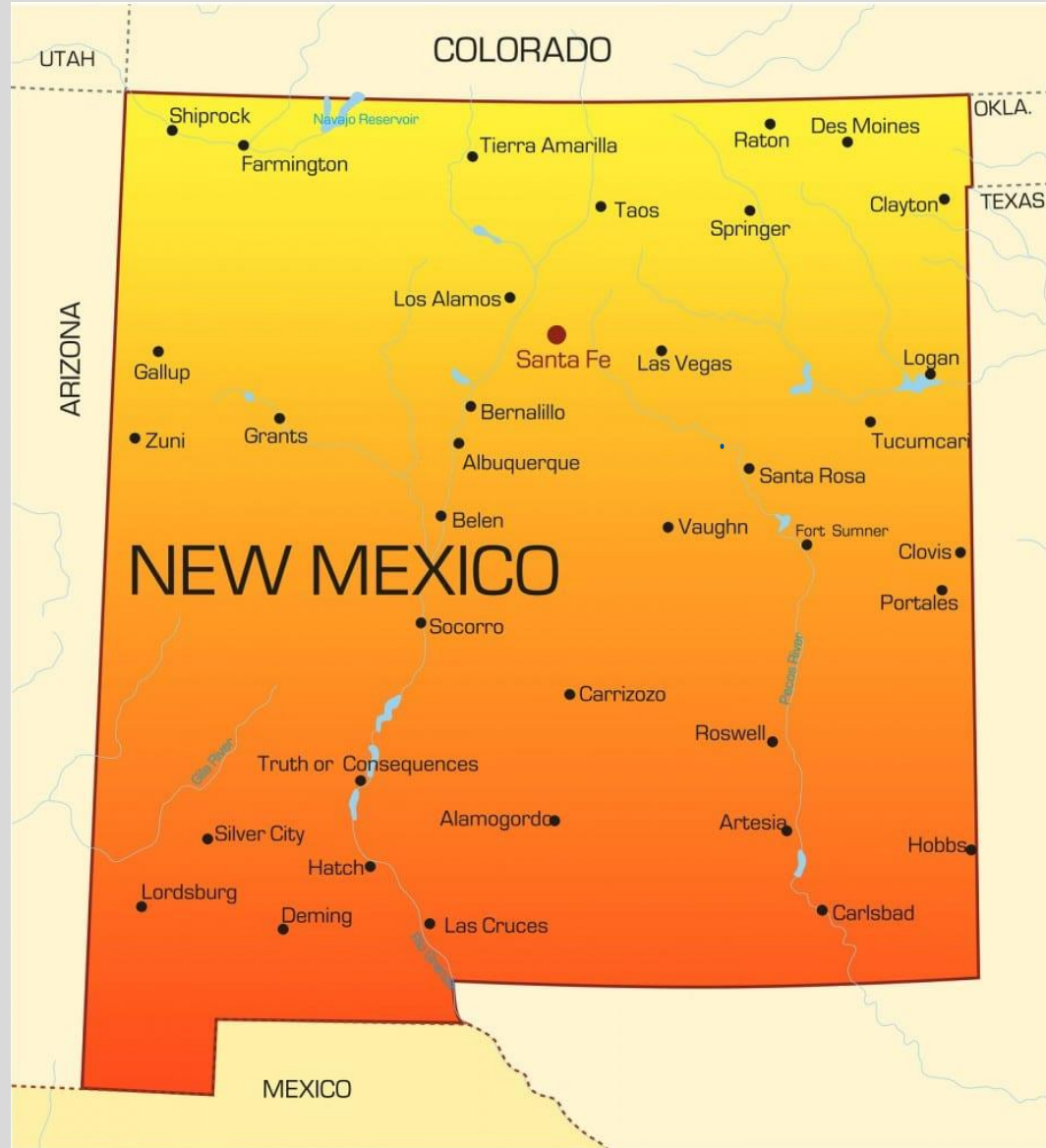
Nearly 16% of Maryland's public school students are enrolled in Gifted programs.



(2018) Accessed from <https://www.fatherly.com/health-science/gifted-and-talented-students-by-state/>

## Varying Gifted Identification Rates in New Mexico





UTAH

COLORADO

OKLA.

TEXAS

ARIZONA

NEW MEXICO

MEXICO

Shiprock

Farmington

Tierra Amarilla

Raton

Des Moines

Taos

Springer

Clayton

Los Alamos

Santa Fe

Las Vegas

Logan

Gallup

Zuni

Grants

Bernalillo

Albuquerque

Tucumcari

Belen

Vaughn

Fort Sumner

Clovis

Portales

Socorro

Carrizozo

Roswell

Truth or Consequences

Silver City

Alamogordo

Artesia

Hobbs

Lordsburg

Hatch

Deming

Las Cruces

Carlsbad

<p><b>Four Corners – Farmington &amp; Surrounding Areas</b></p>	<p><b>Northeastern Affiliate (not established yet)</b></p>
<p><b>Albuquerque Association for Gifted and Talented Students ABQ Metro (AAGTS)</b></p> <p><b>Parents and Advocated of Gifted Education (PAGE) Las Cruces, NM</b></p>	<p><b>Roswell Association for Gifted Students (RAGS) Roswell, NM</b></p>

# CIVIL RIGHTS Data Collection

- Home
- School & District Search
- Detailed Data Tables
- Data Analysis Tools
- Special Reports
- State and National Estimations
- Data Reports
- Downloadable Data Files
- Additional Resources
- FAQ/Tutorial
- Office for Civil Rights (OCR)
- ED.gov



Wide-Ranging Education Data Collected from our Nation's Public Schools

## Quick Search




### School and District Search

View a summary of selected facts about a school or district as well as tables and graphs of reported data



### Detailed Data Tables

Explore and analyze data across schools or districts

## Did You Know?

The CRDC includes data about:

- Enrollment Demographics
- Preschool
- Math & Science Courses
- Advanced Placement
- SAT & ACT
- Student Retention
- Harassment or Bullying
- Discipline
- Restraint or Seclusion
- School Staff
- School Expenditures

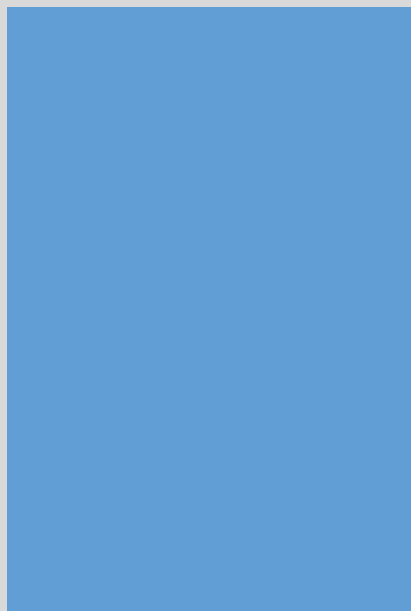
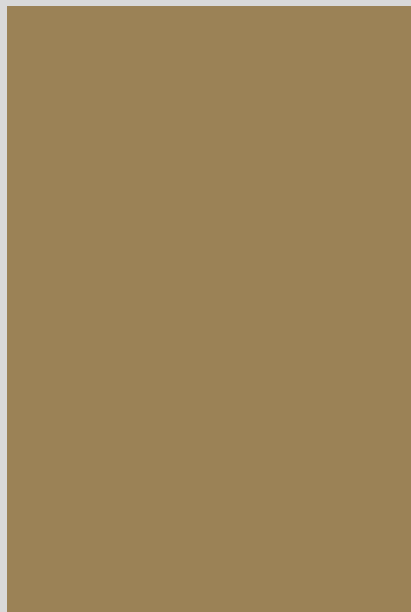
2017-18 CRDC data are now available at this site and at <https://crdc.ed.gov>



# Where Do New Mexicans Stand?

...per the Deputy Director of Public Affairs (Los Alamos National Labs)

1. What is the percentage of LANL associates (**employees**) who are New Mexicans?
2. What is the percentage of LANL associates (**employees**) who are from other states?
3. What is the percentage of research positions (**scientists and engineers**) filled by New Mexicans?
4. What is the percentage of research positions filled by associates from other states?





# Where Do New Mexicans Stand?

1. What is the percentage of LANL associates (**employees**) who are New Mexicans ? **40.2%**

# Where Do New Mexicans Stand?

2. What is the percentage of LANL associates (**employees**) who are from other states? **59.8%**

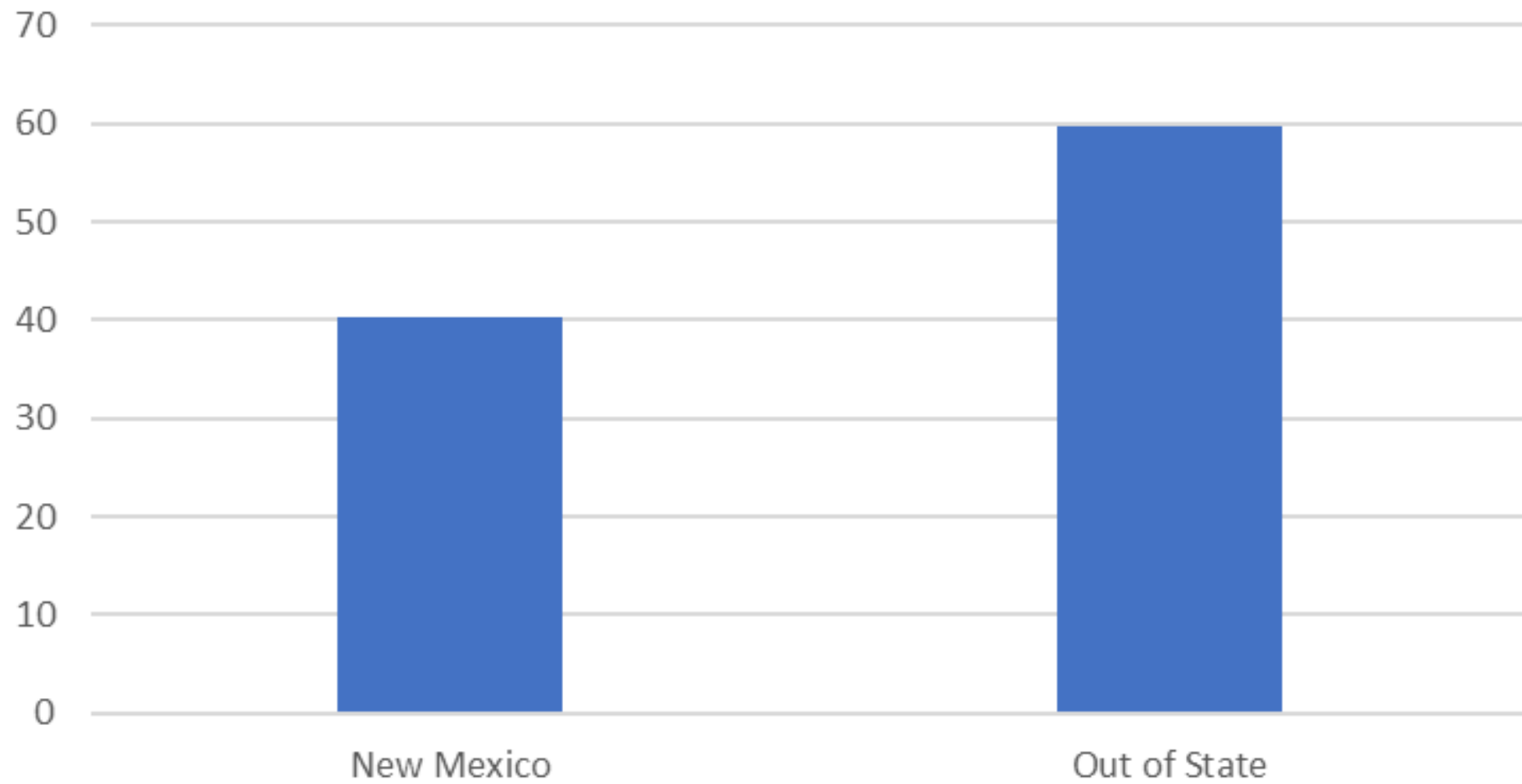
# Where Do New Mexicans Stand?

3. What is the percentage of research positions (**scientists and engineers**) filled by New Mexicans? **11.6%**

# Where Do New Mexicans Stand?

4. What is the percentage of research positions filled by associates from other states? **88.4%**

## Overall/All Positions

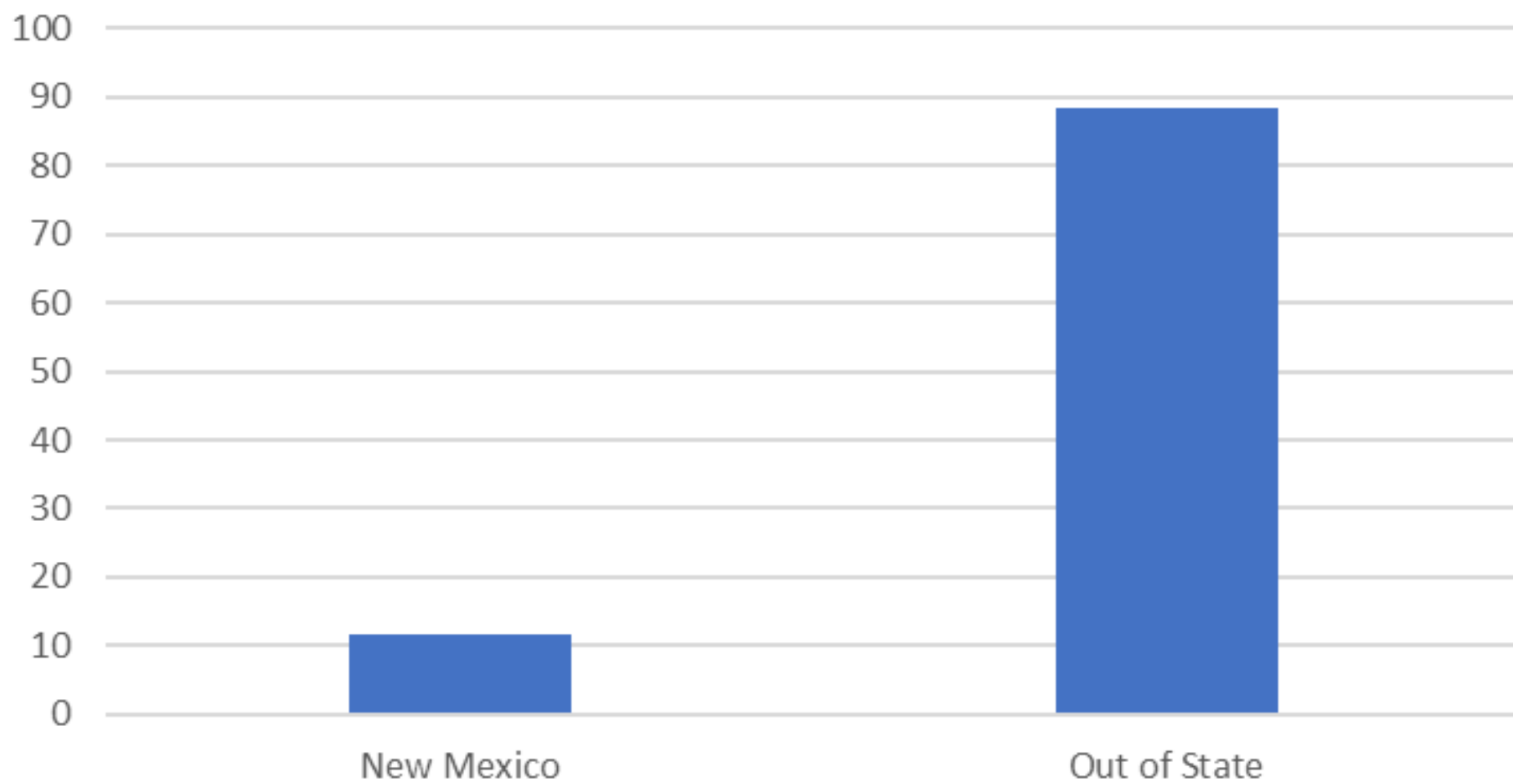


# Overall/All Positions

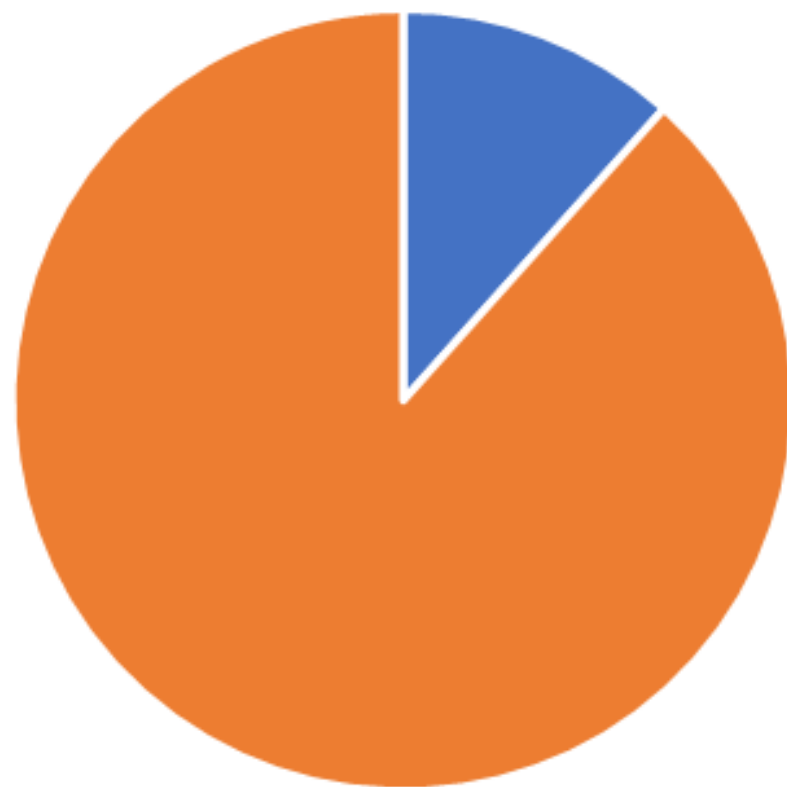


■ New Mexico ■ Out of State

## Scientists/Engineers



## Scientists/Engineers



■ New Mexico ■ Out of State





Where Do  
We Begin?



**Evaluation**



***Identify***

Where Does  
New Mexico  
Stand?

**Not**

**enough**

*Teachers*

champion,  
advocate. noun  
supporter, b  
promoter, r  
aner

## **Albuquerque Association for Gifted and Talented Students (AAGTS)**

President: Kathryn Probosco

Website: <https://www.aagts.org/>

Facebook: AbqGifted

Twitter: AbqGifted

## **4 Corners NMAG**

Email: [4CornersNMAG@gmail.com](mailto:4CornersNMAG@gmail.com)

Voicemail: 505-886-1185

**Parents and Advocated of Gifted Education  
(PAGE)**

Las Cruces, NM

<http://mopagesgf.org/>

**Roswell Association for Gifted Students  
(RAGS)**

Roswell, NM

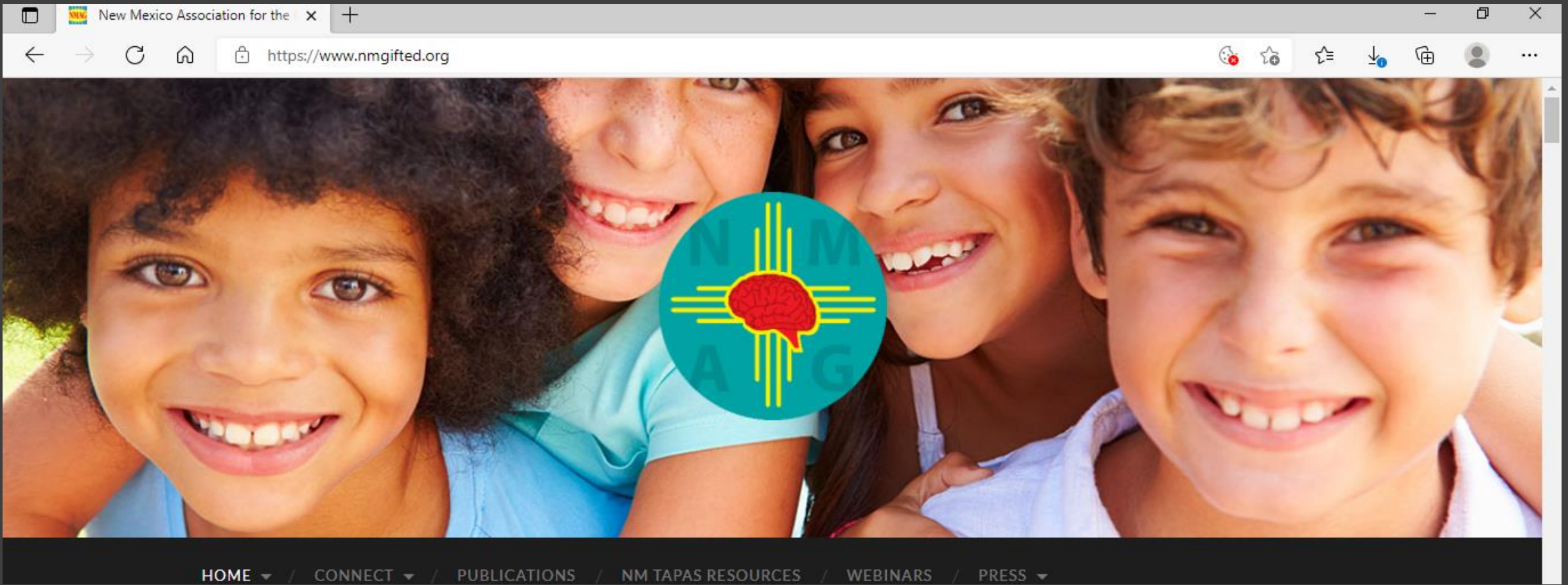
<https://www.centerfornonprofitexcellence.org/nonprofit-directory/nonprofit/7949>

**Northeast Affiliate**  
**(northeastern quadrant of the state)**

The logo consists of the lowercase letters 'tba.' in a bold, sans-serif font. The letters 't', 'b', and 'a' are dark gray, while the period is a bright blue. The logo is centered within a white square.

**tba.**





- [New Mexico Association for the Gifted - Advocating for diverse high ability learners of New Mexico \(nmgifted.org\)](https://www.nmgifted.org)



Virtual on Zoom



With two decades of development, use, refinement, and research the New Mexico Association for the Gifted presents the release of NM TAPAS (New Mexico Talent and Potential Assessment Profile) - a comprehensive tool that includes FTAP-GENIE plus new tools for local norming. This is NMAG's comprehensive resource to allow you to tailor gifted identification to meet the needs in your schools and districts.

2021 Training
New Evaluators - 3 Day - August 17-19
https://forms.gle/Guqh69L1SRAfojTS9

Registration closes August 10th

Compose

Inbox 20,327

Starred

Snoozed

Meet

New meeting

Join a meeting

Hangouts

Billie

Billie Mathews Sent a message

GLF Summer Program You were in a video call

N  
M  
-  
T  
A  
P  
A  
S

- This training will prepare you to:
- adapt updated tools to a virtual model
  - identify gifted students who have needs
  - use local norms to promote equity
  - create a unique workable plan for your school/district to implement

Cost - \$150 for Update FTAP/GENIE Evaluators  
\$400 for New Evaluators

1-50 of 24,563

edit settings... 4:13 PM

School teach... 4:12 PM

or you! - 30+ ... 3:16 PM

h Literacy for ... 1:25 PM

is in Gilbert, ... 1:15 PM

preciated. 12:48 PM

er details bel... 11:16 AM

helm, Farming... 9:53 AM

mid afternoon... 9:24 AM

9:22 AM

9:02 AM

**NM - TAPAS**

**505 330-5574**

**[newmexicotapas@gmail.com](mailto:newmexicotapas@gmail.com)**

# Has Your Definition Changed?

---



*Gifted &  
Talented*



# PARKING LOT

What about other clients in the category?

How many more will we need to do?

When do we need to reserve the venue?

Can we really do that by second quarter?

How much will it cost?

How many can be ordered in bulk?

Can we get the art approved?

Does the client need permission to use their slogan?

Who else could partner on this event?

**Billie G. Mathews, PhD**

**[promoteslearning@gmail.com](mailto:promoteslearning@gmail.com)**

**[billiegmathews@gmail.com](mailto:billiegmathews@gmail.com)**

**[www.promoteslearning.com](http://www.promoteslearning.com)**

**505 617-0543**



