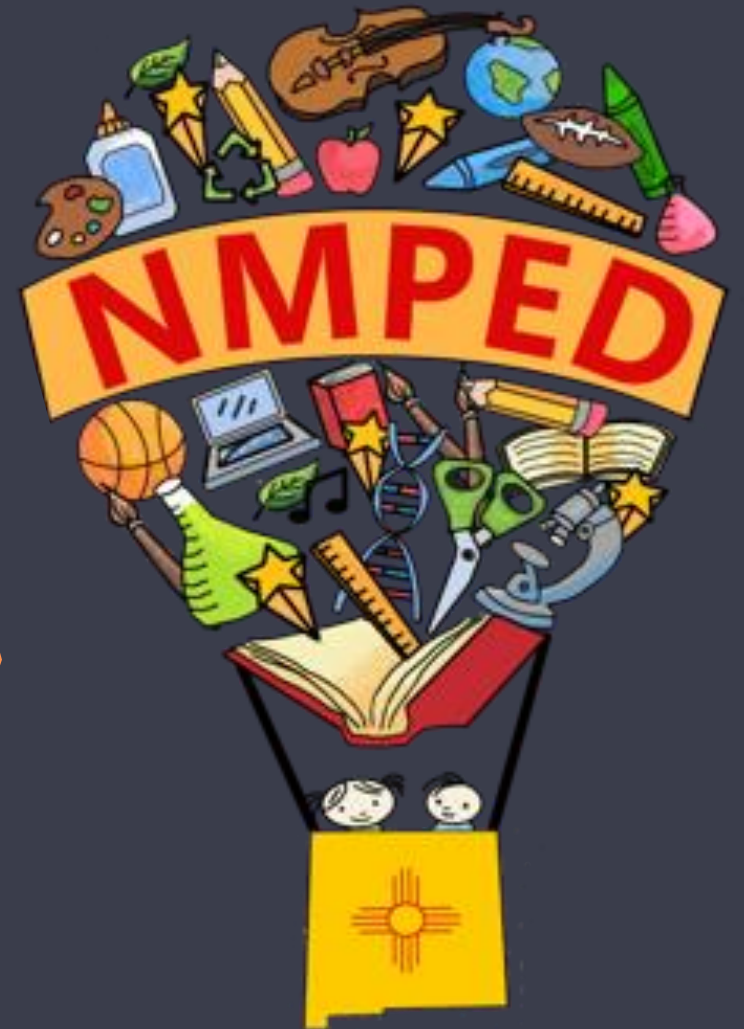


State Equalization Guarantee (SEG) Overview

Sara Cordova

Director of School Budget
Bureau

Investing for tomorrow, delivering today.



22-5-4. Local school boards; powers; duties.

A local school board shall have the following powers or duties:

- A. subject to the rules of the department, develop educational policies for the school district;
- B. employ a local superintendent for the school district and fix the superintendent's salary;
- C. review and approve the annual school district budget;
- D. acquire, lease and dispose of property;
- E. have the capacity to sue and be sued;
- F. acquire property by eminent domain pursuant to the procedures provided in the Eminent Domain Code [42A-1-1 to 42A-1-33 NMSA 1978];
- G. issue general obligation bonds of the school district;
- H. provide for the repair of and maintain all property belonging to the school district;
- I. for good cause and upon order of the district court, subpoena witnesses and documents in connection with a hearing concerning any powers or duties of the local school board;
- J. except for expenditures for salaries, contract for the expenditure of money according to the provisions of the Procurement Code [13-1-28 to 13-1-199 NMSA 1978];
- K. adopt rules pertaining to the administration of all powers or duties of the local school board;
- L. accept or reject any charitable gift, grant, devise or bequest. The particular gift, grant, devise or bequest accepted shall be considered an asset of the school district or the public school to which it is given;
- M. offer and, upon compliance with the conditions of such offer, pay rewards for information leading to the arrest and conviction or other appropriate disciplinary disposition by the courts or juvenile authorities of offenders in case of theft, defacement or destruction of school district property. All such rewards shall be paid from school district funds in accordance with rules promulgated by the department; and
- N. give prior approval for any educational program in a public school in the school district that is to be conducted, sponsored, carried on or caused to be carried on by a private organization or agency.

What is a Budget?

- A Financial **plan** of **proposed** revenues and **proposed** expenditures for a single State Fiscal Year (July 1 – June 30).
- Importance:
 - **Statute 22-8-11. Budgets; approval of operating budget.**
B. No school district or charter school or officer or employee of a school district or charter school shall make any expenditure or incur any obligation for the expenditure of public funds unless that expenditure or obligation is made in accordance with an operating budget approved by the department. This prohibition does not prohibit the transfer of funds pursuant to the department's rules and procedures.



What accounts for more than 90% of schools' operational budget/revenue?

State Equalization Guarantee (SEG)

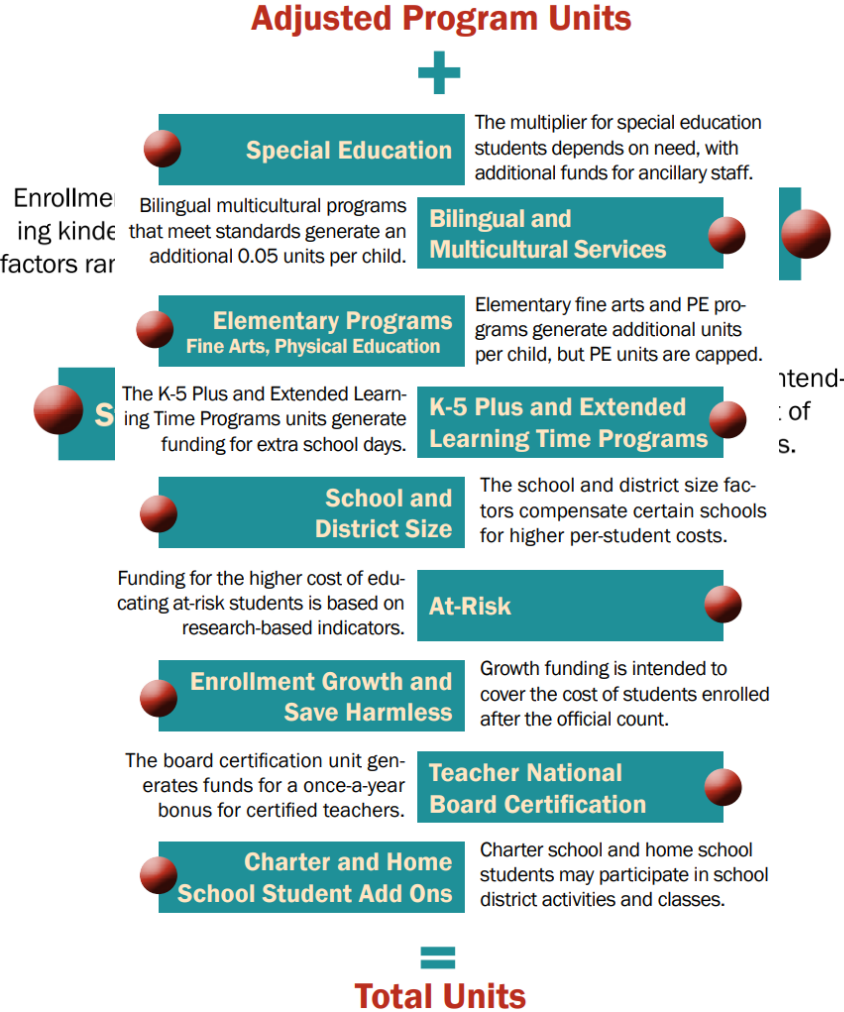


SEG - Intent

- The funding formula otherwise known as SEG was enacted in the 1974 Public School Finance Act [22-8-17 through 25 NMSA 1978].
- The intent of SEG is to equalize financial opportunity at the highest possible revenue level and to guarantee each New Mexico public school student equal access to programs and services appropriate to their educational needs regardless of geographic location or local economic conditions. Through the absence of categorical funding and fund “tracking,” the act also seeks to encourage local school initiatives in seeking more efficient and effective means of achieving desirable educational goals.

SEG – Program Units

- In SEG, cost differentials reflect the costs associated with providing educational services to students all of whom have differing needs. For example, educating high school students costs more than educating first graders and that additional funding is required for the provision of bilingual education and special education services.
- Program Units, although primarily based on student enrollment, are weighted for school size, teacher qualifications, the special needs of students, and other factors. Currently, the formula has 17 components.



SEG – Unit Value and Program Cost

- Unit value - To determine the value of each program unit, the Public Education Department (PED) divides the appropriation to the SEG by a forecast (initial) and actuals (final) of the statewide total number of program units.
- The grand total of all the units is then multiplied by the unit value for that school year resulting in the district's program cost.

$$\begin{array}{c} \times \\ \hline \text{Unit Value} \\ \hline = \\ \text{Program Cost} \end{array}$$

SEG – Credits

- 90% of the amount certified for the school district by PED pursuant to the Energy Efficiency and Renewable Energy Bonding Act [Chapter 6, Article 21D NMSA 1978] is subtracted from the Program costs.
- Historical credits were eliminated from the SEG in HB6 of the 2021 Regular Legislative Session. Those credits were operational revenue from:
 - ✓ Impact Aid
 - ✓ Ad Valorem
 - ✓ Forest Reserve

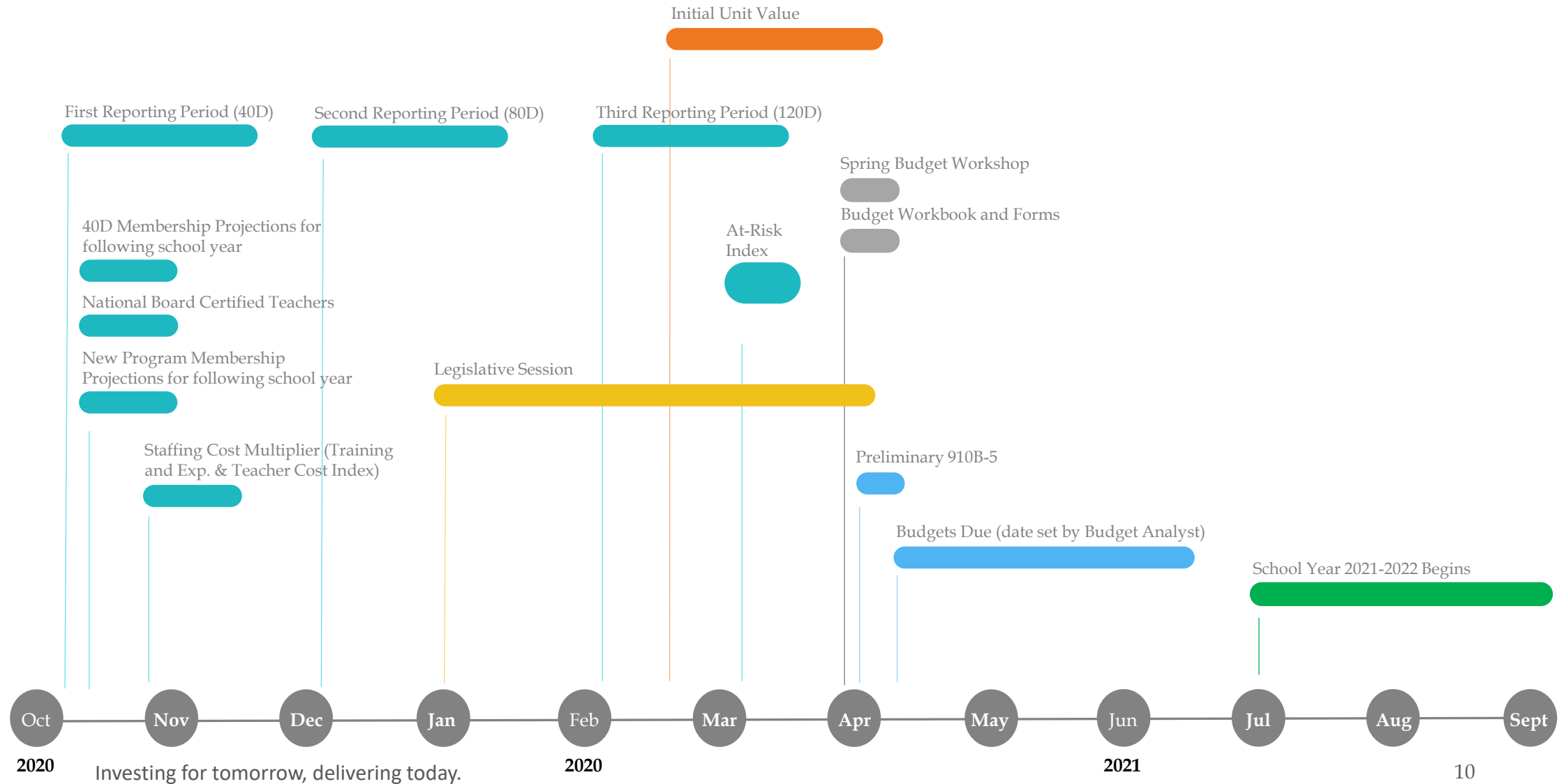
Energy Conservation Credits

SEG – SEG Distribution


- Typically, SEG is distributed on the 10th of each month except for the months of July and June which may occur later. After receipt of SEG, parent districts must distribute their local charters' SEG within five days and are allowed to retain 2%. PED retains 2% of state charters' SEG.
 - Preliminary SEG - distributed between July through around January, March, or April. SEG is in a preliminary status due to the below:
 - ✓ Projected Membership for Growth
 - ✓ Projected New Program Membership
 - ✓ Prior Year National Board-Certified Teachers (NBCTs)
 - ✓ Initial Unit Value
 - Final SEG – adjusted and distributed between January, March, or April through June. Adjustments include:
 - ✓ Staffing Cost Multiplier Audits (if applicable)
 - ✓ Other Audits (if applicable)
 - ✓ Current school year NBCTs
 - ✓ Current school year 40D Membership for Growth
 - ✓ Current school year 40D New Program Membership
 - ✓ Save Harmless (if applicable)
 - ✓ Final Unit Value


**State Equalization Guarantee
Distribution**

Preliminary 2021-2022 SEG Roadmap



20-21 National Board Certified Teachers



National Board for Professional Teaching Standards
2020-2021 Certification

In accordance with New Mexico Statute 22-8-23.4 National Board for Professional Teaching Standards (NBPTS), list the names of all teachers who have obtained a NBPTS certificate on or before the first reporting period (40D) of the current school year. You may be required to provide copies of the certificate(s). Please note, if we can not verify the certificates, either by the name(s) listed below or by hard copy, your State Equalization Guarantee (SEG) will be adjusted accordingly. Sign and upload the completed form to the File Transfer Site in the FY21 -> Membership folder.

Naming Convention: Entity Name FY23 NBCT PED-NO

1	Monkey D. Luffy	24	47	70
2		25	48	71
3		26	49	72
4		27	50	73
5		28	51	74
6		29	52	75
7		30	53	76
8		31	54	77

National Board Certified Teachers

FTE:
1.00

New Program Membership Projections for 21-22

Projections are subject to change based on approved applications submitted to the respective Program Manager
 This adjustment may occur before the Final SEG is released.

K5-Plus (K5+) Program	
Will the District/Charter be continuing the K5+ Program in FY22?	Yes
Will the District/Charter be implementing a NEW K5+ Program in FY22?	Yes
FY22 K5+ Program 40D NEW MEM Projection (do not include existing MEM):	220
Fine Arts Education (FAEA) Program	
Will the District/Charter be continuing the FAEA Program in FY22?	Yes
Will the District/Charter be implementing a NEW FAEA Program in FY22?	Yes
FY22 FAEA Program 40D NEW MEM Projection (do not include existing MEM):	220
Bilingual Multicultural Education (BME) Program	
Will the District/Charter be continuing the BME Program in FY22?	Yes
Will the District/Charter be implementing a NEW BME Program in FY22?	Yes
FY22 BME Program 40D NEW MEM Projection (do not include existing MEM):	1hr 195 2hr 25 3hr 0
Extended Learning Time Program (ELT) Program	
Will the District/Charter be continuing the ELT Program in FY22?	Yes
Will the District/Charter be implementing a NEW ELT Program in FY22?	Yes
FY22 ELT Program 40D NEW MEM Projection (do not include existing MEM):	220

Elementary Fine Arts Program (separated data entry: 80/120 average data, projection for new program (parts))			
	80/120 ave MEM		New FAEA Prog. MEM
	373.50		220.00
Bilingual Program (separated data entry: 80/120 average data, projection for new program (parts))			
HOURS	80/120 ave MEM	FTE	New BMEP Prog. MEM
1			195.00
2			25.00
3			0.00
Total Bilingual	558.60	100.38	220.00
<i>(May not total more than the no. of students in grades K-12.)</i>			
Extended Learning Time Program Units (including New Program Projections)			
	80/120 ave MEM		New ELT Prog. MEM
	373.50		220.00
K-5 Plus Program Units (including New Program Projections)			
	80/120 ave MEM		New K-5+ Prog. MEM
	373.50		220.00

20-21 Staffing Cost Multiplier(SCM) - Training & Experience and Teacher Cost Index

Training and Experience Report October 2020



School District: ABC MUNICIPAL PUBLIC SCHOOLS

Index: 1.043

Teacher Cost Index (TCI) Report October 2020



School District: ABC MUNICIPAL PUBLIC SCHOOLS

Index: 1.005

Staffing Cost Multiplier

T & E Index	1.043
TCI Index	1.005

FY22 SCM PHASE-IN WEIGHTS

	0.25
	0.75
STAFFING COST MULTIPLIER (SCM)	1.015

20-21 40D Mem

2021 Membership - District Detail Report - OFFICIAL

District and State Charters only

District : ABC MUNICIPAL

No Charters

School Year: 2020-2021 Snapshot Date: 2020-10-01 - 40D



(Not applicable at EOY)

Grand Total		3	1	10	15	1173	1202	1.5	0.5	10.0	15.0	1173.0	1200.0
-------------	--	---	---	----	----	------	------	-----	-----	------	------	--------	--------

'Basic' includes all active students in the school except for C Level (Level of Integration Code = 3), D Level (LoIC = 4), Special Ed, 3Y, and 4Y students.

Students in KN (Half Day Kindergarten) and students in 3Y and 4Y (by definition in Pre-K) are counted as .5 FTE. All other students are 1 FTE. If no students in the district are KN, no summary row for KN will appear for any school.

Superintendent/Charter School Official: Please indicate the membership data is correct and certified by signing and dating below.

Signature

Date

Is this a Charter School? Please enter Y or N	N
Is this for the 40th Day? Please enter Y or N.	N

Growth Units

GROWTH CALCULATION DATA	
2020-21 Actual 40th MEM (Enter the District Mem EXCLUDING Charter Mem)	1,200.00
2021-22 Projected MEM (Enter the District Mem EXCLUDING Charter Mem)	0.00
2021-22 Actual 40th MEM (Enter the District Mem EXCLUDING Charter Mem)	0.00
Growth Data	
2021-22 Operating Budget Calculation	0.000
<i>Op-Bud takes 20-21 40 Day compared to 21-22 Mem Proj. FTE</i>	
40th Day Calculation	0.000
<i>Takes Prior Year 40th-Day and compares to Current Year 40th-Day</i>	

40D Membership Projections for 21-22

Membership Projections

School Year: 2021-2022
District: ABC MUNICIPAL PUBLIC SCHOOLS

NEW MEXICO
 Public Education Department

ABC MUNICIPAL PUBLIC SCHOOLS	
Total Membership	1422
Total FTE	1416.50
Total Special ED A/B Membership	182
Total Special ED Ancillary FTE	12.00

Growth Units

GROWTH CALCULATION DATA	
2020-21 Actual 40th MEM (Enter the District Mem EXCLUDING Charter Mem)	1,200.00
2021-22 Projected MEM (Enter the District Mem EXCLUDING Charter Mem)	1,416.50
2021-22 Actual 40th MEM (Enter the District Mem EXCLUDING Charter Mem)	0.00
Growth Data	
2021-22 Operating Budget Calculation	411.753
<i>Cy-2022 takes 20-21 40th Day compared to 21-22 Mem Proj. FTE</i>	
40th Day Calculation	0.000
<i>Takes Prior Year 40th-Day and compares to Current Year 40th-Day</i>	

GROWTH UNITS

411.753
Units

CAUTION - LARGE PROJECTED GROWTH

20-21 80D/120D Averages

Utilizing 910B5 tool found on SBBs website, on the 80-120 sheet:

- 1) key enter 80D data on the right side
- 2) key enter 120D on the left side

The examples provided in this PowerPoint only show the key entry of 80D

2020-2021 Second Reporting Period (80D) DATA ENTRY
80D

Entity	<i>Select Name in dropdown below, clear cell for new selection</i>				Ped No	GRADE
	3Y DD	4Y DD	C & C-GIFTED	D & D-GIFTED	000-000	TOTAL
					*BASIC	
Kindergarten Program:						
ECE/KN						0.00
FDK						0.00
Basic Program:						
Grade 1						0.00
Grade 2						0.00
Grade 3						0.00
Grade 4						0.00
Grade 5						0.00
Grade 6						0.00
Grade 7						0.00
Grade 8						0.00
Grade 9						0.00
Grade 10						0.00
Grade 11						0.00
Grade 12						0.00
Totals	0.00	0.00	0.00	0.00	0.00	0.00
*INCLUDE STUDENTS RECEIVING A/B SERVICES						ECE FTE
						0.00
TOTAL GRADES 1-12						0.00
SUBTOTAL MEM						0.00
Charter School Mem (for District size calculations)						
TOTAL MEM						0.00

2020-2021 Third Reporting Period (120D) DATA ENTRY
120D

Entity					Ped No	GRADE
	3Y DD	4Y DD	C & C-GIFTED	D & D-GIFTED	000-000	TOTAL
					*BASIC	
Kindergarten Program:						
ECE/KN						0.00
FDK						0.00
Basic Program:						
Grade 1						0.00
Grade 2						0.00
Grade 3						0.00
Grade 4						0.00
Grade 5						0.00
Grade 6						0.00
Grade 7						0.00
Grade 8						0.00
Grade 9						0.00
Grade 10						0.00
Grade 11						0.00
Grade 12						0.00
Totals	0.00	0.00	0.00	0.00	0.00	0.00
*INCLUDE STUDENTS RECEIVING A/B SERVICES						ECE FTE
						0.00
TOTAL GRADES 1-12						0.00
SUBTOTAL MEM						0.00
Charter School Mem (for District size calculations)						
TOTAL MEM						0.00

20-21 80D/120D Averages

2021 Membership - District Detail Report - OFFICIAL

District and State Charters only

District : ABC MUNICIPAL

No Charters

School Year: 2020-2021 Snapshot Date: 2020-12-15 - 80D



(Not applicable at EOY)

		Membership						FTE							
		3Y	4Y	C	D	Basic	Mem	3Y	4Y	C	D	Basic	FTE		
				Level	Level		Total			Level	Level		Total		
District Total	01			3	2	74	76					2.0	74.0	76.0	
	02					101	101						101.0	101.0	
	03					92	92						92.0	92.0	
	04				1	86	87					1.0	86.0	87.0	
	05				1	81	82					1.0	81.0	82.0	
	06				2	98	100					2.0	98.0	100.0	
	07				1	87	88					1.0	87.0	88.0	
	08				2	75	77					2.0	75.0	77.0	
	09			3		95	98			3.0			95.0	98.0	
	10			1	2	112	115			1.0	2.0		112.0	115.0	
	11				2	80	82					2.0	80.0	82.0	
	12			5		100	105			5.0			100.0	105.0	
	KF				1	89	90					1.0	89.0	90.0	
	PK		2	1			3	1.0	0.5					1.5	
Grand Total		1	2	2	1	10	13	1170	1196	1.0	0.5	10.0	13.0	1170.0	1194.5

2020-2021 Second Reporting Period (80D) Data Entry 80D

Start Typing District / Charter Name in cell C3, Select Dropdown, then Select Correct School Name.
If you cannot find your school name, clear cell C3, Select Dropdown, Scroll through selection, Select Correct School Name.

Entity	3Y DD				4Y DD		C & C-GIFTED	D & D-GIFTED	Ped No	GRADE
ABC MUNICIPAL	Dropdown								090-000	TOTAL
	3Y DD	4Y DD	C-GIFTED	D-GIFTED	*BASIC					
Kindergarten Program:										
ECE/KN (PK)	1	2.00	2	1.00	3	4		5	3.00	
FDK (KF)					1.00			89.00	90.00	
Basic Program:										
Grade 1							2.00	74.00	76.00	
Grade 2								101.00	101.00	
Grade 3								92.00	92.00	
Grade 4							1.00	86.00	87.00	
Grade 5							1.00	81.00	82.00	
Grade 6							2.00	98.00	100.00	
Grade 7							1.00	87.00	88.00	
Grade 8							2.00	75.00	77.00	
Grade 9					3.00			95.00	98.00	
Grade 10					1.00	2.00		112.00	115.00	
Grade 11							2.00	80.00	82.00	
Grade 12					5.00			100.00	105.00	
Totals	2.00	1.00	10.00	13.00	1,170.00					
*INCLUDE STUDENTS RECEIVING A/B SERVICES										
	ECE (PK & KF) FTE								91.50	
	TOTAL GRADES 1-12								1,103.00	
	SUBTOTAL MEM								1,194.50	
	Charter School Mem (for District size calculations)								0.00	
	TOTAL MEM								1,194.50	

20-21 80D/120D Averages

2021 Membership - District Detail Report - OFFICIAL

District and State Charters only

District : ABC MUNICIPAL

No Charters

School Year: 2020-2021 Snapshot Date: 2020-12-15 - 80D

(Not applicable at EOY)



Size Adjustment Units

Basic Mem includes all students in the school except for C Level (Level of Integration Code = 3), D Level (LoIC = 4), Special Ed, 3Y, and 4Y students.

School Type	School Name	School ID	Basic Mem	Program Units
Elementary / Jr. High	ALPHABET ELEMENTARY	001	325	0.000
	COLORS MIDDLE	002	162	30.780
	NUMBERS ELEMENTARY	003	44	34.320
	SHAPES ELEMENTARY	004	252	0.000
	Elementary / Jr. High Total:			
High School	PENCIL HIGH	005	387	20.124
High School Total:				20.124
Summary:				85.224

1. ELEMENTARY/MIDDLE SCHOOL/JUNIOR HIGH			
SCHOOL NAME	CODE	GRADES	MEM
ALPHABET ELEMENTARY	001	PK-03	325.00
COLORS MIDDLE	002	07-08	162.00
NUMBERS ELEMENTARY	003	KF-05	44.00
SHAPES ELEMENTARY	004	04-06	252.00
2. SENIOR HIGH SCHOOL			
SCHOOL NAME	CODE	GRADES	MEM
PENCIL HIGH	005	09-12	387.00

20-21 80D/120D Averages

2021 Membership - District Detail Report - OFFICIAL

District and State Charters only

District : ABC MUNICIPAL

No Charters

School Year: 2020-2021 Snapshot Date: 2020-12-15 - 80D



(Not applicable at EOY)

FAEA Totals

Only schools with an approved FAEA application will be listed and students are counted by approved grade levels under ExistingProgram or NewProgram. Grades K-6 only.

District Name	Location Name	Charter	Students Exist Pgm	Students New Pgm
ABC MUNICIPAL	ALPHABET ELEMENTARY	Non-Charter	328	0
ABC MUNICIPAL	NUMBERS ELEMENTARY	Non-Charter	0	44
District Total			328	44

A/B Membership include 3Y 4Y AB

A/B Membership	A/B Level 3Y-4Y	C Level 3Y-4Y	D Level 3Y-4Y
Student Count	Student Count	Student Count	Student Count
169			3

Charter School Students participating in a District Activity

Charters cannot claim this funding

Student Count
1

Home School Students participating in a District Activity

Student Count
1

Elementary Fine Arts Program (FAEA):

MEM	372.00
-----	--------

Special Education

A/B MEM (Reg/Gifted)	169.00	(Includes 3Y-4Y A/B)
D LEVEL 3Y-4Y	3.00	
TOTAL Ancillary FTE		

Districts ONLY

Charter Schools Student Activities

MEM	1.00
-----	------

Home School Student Activities

MEM	1.00
-----	------

20-21 80D/120D Averages

2021 Membership - District Detail Report - OFFICIAL

District and State Charters only

District : ABC MUNICIPAL

No Charters

School Year: 2020-2021 Snapshot Date: 2020-12-15 - 80D



(Not applicable at EOY)

Bilingual Education FTE

Only schools with an approved Bilingual Education Program (BEP) application will be listed and students are counted under ExistingProgram or NewProgram for students in a BEP program with a Bilingual Hour specified. Grades K-12 only.

Location Name	BEP Students Existing Pgm	BEP Students New Pgm	1 Hr Exist Pgm	1 Hr New Pgm	2 Hr Exist Pgm	2 Hr New Pgm	3 Hr Exist Pgm	3 Hr New Pgm	FTE Exist Pgm	FTE New Pgm
ALPHABET ELEMENTARY	325	0	313	0	12	0	0	0	56.16	0.00
COLORS MIDDLE	91	0	79	0	12	0	0	0	17.16	0.00
NUMBERS ELEMENTARY	0	12	0	10	0	2	0	0	0.00	2.33
PENCIL HIGH	125	0	122	0	3	0	0	0	21.33	0.00
	541	12	514 + 10		27 + 2		0 + 0		94.65	2.33

Bilingual Education Program:		
HOURS		MEM
1		524.00
2		29.00
3		0.00
Total Bilingual		553.00
Extended Learning Time (ELTP) Program		
	MEM	
		372.00

Extended Learning Time Program (ELTP) Totals

Only schools with an approved ELTP application will be listed and students are counted under ExistingProgram or NewProgram. Grades K-12 only.

District Name	Location Name	Charter	Students Exist Pgm	Students New Pgm
ABC MUNICIPAL	ALPHABET ELEMENTARY	Non-Charter	328	0
ABC MUNICIPAL	NUMBERS ELEMENTARY	Non-Charter	0	44
District Total			328 +	44

20-21 80D/120D Averages

2021 Membership - District Detail Report - OFFICIAL

District and State Charters only

District : ABC MUNICIPAL

No Charters

School Year: 2020-2021 Snapshot Date: 2020-12-15 - 80D

K-5 Plus Totals

Only schools with an approved K-5 Plus application will be listed and students are counted under ExistingProgram or NewProgram. Grades K-8 only.

District Name	Location Name	Charter	Students Exist Pgm	Students New Pgm
ABC MUNICIPAL	ALPHABET ELEMENTARY	Non-Charter	328	0
ABC MUNICIPAL	NUMBERS ELEMENTARY	Non-Charter	0	44
District Total			328	44

Ancillary FTE

Includes all staff with a Staff Assignment Code set to '26','82','84','85','86','87','88','89','90','91','92','93','95','98','99','111'. It does not include the '26S','82S','84S','85S','86S','87S','88S','89S','90S','91S','92S','93S','95S','98S','99S','111S' as all services to 3Y and 4Y are funded through the 3Y/4Y membership.

Full Location Name	Contract FTE
ABC MUNICIPAL DIST OFFICE	4.30
ALPHABEHT ELEMENTARY	0.48
COLORS MIDDLE	0.09
NUMBERS ELEMENTARY	0.41
PENCIL HIGH	0.91
SHAPES ELEMENTARY	1.75

Summary

Total Contract FTE:	7.94
Total Caseload FTE for assignment 95:	0.30
Funded Related Service FTE:	7.64



(Not applicable at EOY)

Special Education

A/B MEM (Reg/Gifted)	169.00	<i>(Includes 3Y-4Y A/B)</i>
D LEVEL 3Y-4Y	3.00	
TOTAL Ancillary FTE	7.64	

Districts ONLY

Charter Schools Student Activities

MEM	1.00
-----	------

Home School Student Activities

MEM	1.00
-----	------

Home School Student Program

of Students # of Classes

Bilingual Education Program:

HOURS	MEM
1	524.00
2	29.00
3	0.00
Total Bilingual	553.00

Extended Learning Time (ELTP) Program

MEM	372.00
-----	--------

K-5 Plus Program

MEM	372.00
-----	--------

20-21 80D/120D Averages

2021 Membership - District Detail Report - OFFICIAL

District and State Charters only

District : ABC MUNICIPAL

No Charters

School Year: 2020-2021 Snapshot Date: 2020-12-15 - 80D



(Not applicable at EOY)

Elementary PE Totals

Includes K-6 students enrolled in course codes 2301 (K-6 Physical Education) or 2317 (K-8 Adaptive PE).

District Name	Location Name	Charter	Total Students
ABC MUNICIPAL	ALPHABET ELEMENTARY	Non-Charter	328
ABC MUNICIPAL	NUMBERS ELEMENTARY	Non-Charter	44
ABC MUNICIPAL	SHAPES ELEMENTARY	Non-Charter	251
District Total			623

Home School Students taking a District Course

Click on Hyperlink on the STUDENT_NAME for detail data on courses.

DISTRICT NAME	LOCATION NAME	STUDENT NAME	COURSE COUNT
ABC MUNICIPAL	ALPHABET ELEMENTARY	Uzumaki, Naruto	2
ABC MUNICIPAL	ALPHABET ELEMENTARY	Kurosaki, Ichigo	1

*This funding is related to Students in the student template only that are flagged Home Schooled and taken courses in a School District. State or Local Charter do not qualify for this funding. Also this funding is not the same as a Home School student taking a district activity.

Districts ONLY

Charter Schools Student Activities

MEM
1.00

Home School Student Activities

MEM
1.00

Home School Student Program

of Students # of Classes
2.00 3.00

20-21 80D/120D Averages

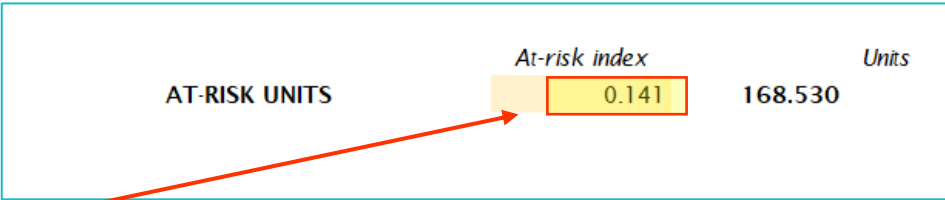
2020-2021 80/120 AVERAGE TO COMPUTE THE 2021-2022 SEG REVENUE ESTIMATE WORKSHEET						
Entity					Ped No	
ABC MUNICIPAL					090-000	
			C &	D &		GRADE
	3Y DD	4Y DD	C-GIFTED	D-GIFTED	*BASIC	TOTAL
Kindergarten Program:						
ECE/KN (PK)	1.50	1.00	0.00	0.00	0.00	2.50
FDK (KF)	0.00	0.00	1.00	0.50	90.50	92.00
Basic Program:						
Grade 1			0.00	1.00	73.50	74.50
Grade 2			0.00	0.00	101.00	101.00
Grade 3			0.00	0.00	92.50	92.50
Grade 4			0.00	1.00	86.50	87.50
Grade 5			0.00	1.00	81.50	82.50
Grade 6			0.00	1.50	98.50	100.00
Grade 7			0.00	1.00	86.00	87.00
Grade 8			0.00	1.50	75.00	76.50
Grade 9			2.50	0.00	95.50	98.00
Grade 10			1.00	2.00	112.50	115.50
Grade 11			0.00	1.50	80.00	81.50
Grade 12			5.00	0.00	100.50	105.50
Totals	1.50	1.00	9.50	11.00	1,173.50	
*INCLUDE STUDENTS RECEIVING A/B SERVICES					ECE (PK & KF) FTE	93.25
					TOTAL GRADES 1-12	1,102.00
					SUBTOTAL MEM	1,195.25
Charter School Mem (for District size calculations)						0.00
					TOTAL MEM	1,195.25
Elementary Fine Arts Program (FAEA):						
MEM						
373.50						
Special Education						
A/B MEM (Reg/Gifted)	169.50	(Includes 3Y-4Y A/B)				
D LEVEL 3Y-4Y	3.50					
Adjusted Ancillary FTE	7.60					

Districts ONLY				
Charter Schools Student Activities		Home School Student Activities		
MEM		MEM		
1.50		1.00		
Home School Student Program				
# of Students		# of Classes		
2.00		2.50		
Bilingual Education Program:				
HOURS	MEM	FTE		
1	522.50	87.08		
2	28.50	9.50		
3	7.60	3.80		
Total Bilingual	558.60	100.38		
Extended Learning Time (ELTP) Program				
MEM				
373.50				
K-5 Plus Program				
MEM				
373.50				
1. ELEMENTARY/MIDDLE SCHOOL/JUNIOR HIGH				
SCHOOL NAME	CODE	GRADES	MEM	UNITS
ALPHABET ELEMENTARY	001	PK-03	326.00	0.000
COLORS MIDDLE	002	07-08	161.00	31.395
NUMBERS ELEMENTARY	003	KF-05	45.00	34.875
SHAPES ELEMENTARY	004	04-06	253.00	0.000
TOTAL ELEMENTARY/MIDDLE SCHOOL/JUNIOR HIGH UNITS				66.270
2. SENIOR HIGH SCHOOL				
SCHOOL NAME	CODE	GRADES	MEM	UNITS
PENCIL HIGH	005	09-12	388.50	17.871
TOTAL SENIOR HIGH SCHOOL UNITS				17.871

21-22 At-Risk Index

2021-2022 AT-RISK INDEX

	A	B	C	D	E
	AVERAGE TITLE I	AVERAGE MOBILITY	AVERAGE ELL	D = A + B + C	E = D × 0.3000
DISTRICT	2018-2019 to 2020-21	2017-18 to 2019-20	2018-2019 to 2020-21	TOTAL RATES	2021-2022 AT-RISK INDEX
ABC MUNICIPAL	0.295	0.142	0.034	0.471	0.141



21-22 Initial Unit Value

April 9, 2021

MEMORANDUM

TO: Public School Superintendents
Charter School Officials
Local School Board Presidents
Business Managers

FROM: Ryan Stewart, Ed.L.D.
Secretary of Education

^{DS}
RS

× Unit Value

\$

4,770.70

RE: 2021-2022 Initial Program Unit Value

In accordance with the General Appropriation Act of 2021, I am establishing the initial unit value for 2021-2022 school year budgets at **\$4,770.70**, an increase of \$233.95 from the 2020-2021 unit value of \$4,536.75, or an increase of approximately 5.16 percent.

If you have any questions or need additional information, please do not hesitate to contact your assigned budget analyst.

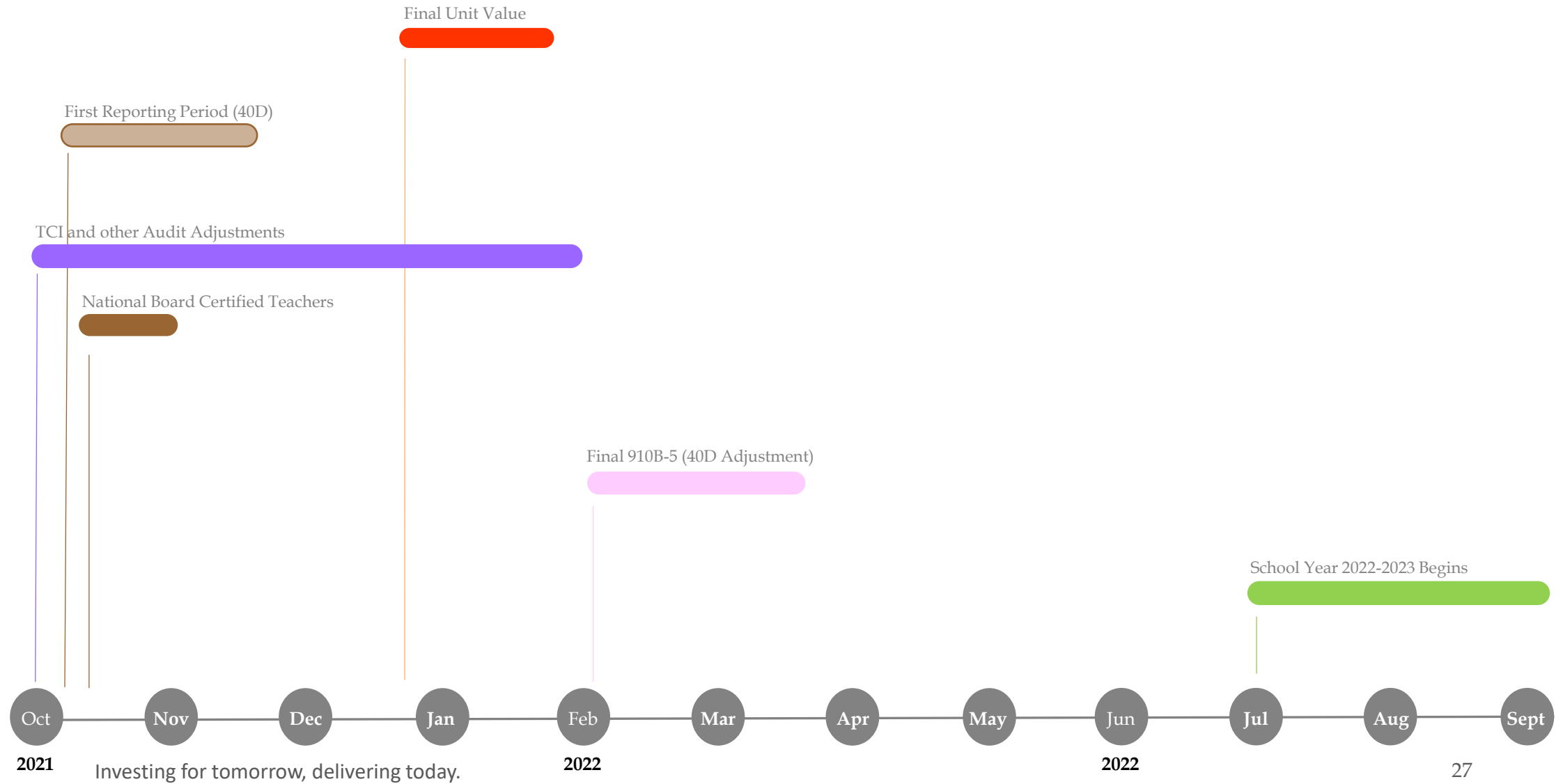
Preliminary SEG Amount and Legislative Updates

2021 HB2 Hold Harmless:

STATE EQUALIZATION GUARANTEE INCL. BASE SEG, ELTP, AND K5+		\$14,035,423.26
<i>BASE SEG FY22</i>	\$12,874,544.97	
<i>BASE SEG as of January 1, 2021</i>	\$ 11,549,236.01	HB2 hold harmless amount
<i>State Charter School Admin. Withholding</i>	\$0.00	\$0.00
STATE EQUALIZATION GUARANTEE INCL. BASE SEG, ELTP, K5+, AND HB2 HOLD HARMLESS		\$14,035,423.26

*Subject to change after the first reporting period and the setting of the unit value.

Final 2021-2022 SEG Roadmap



Audit on 20-21 T&E and TCI

Only applies if you are selected for an audit

- The submitted T&E Index Report calculated the T&E Index Factor = 1.043
- The submitted TCI Index Report calculated TCI Index Factor = 1.005

Staffing Cost Multiplier

T & E Index
TCI Index

1.058
1.000

STAFFING COST MULTIPLIER (SCM)

FY22 SCM PHASE-IN WEIGHTS	
0.25	
0.75	
1.015	

SE-IN WEIGHTS
0.25
0.75
1.015

- The audited T&E Index Factor for FY20-21 increased to 1.058
- The audited TCI Index Factor for FY20-21 decreased to 1.000

National Board Certified Teachers



**National Board for Professional Teaching Standards
2021-2022 Certification**

In accordance with New Mexico Statute 22-8-23.4 National Board for Professional Teaching Standards (NBPTS), list the names of all teachers who have obtained a NBPTS certificate on or before the first reporting period (40D) of the current school year. You may be required to provide copies of the certificate(s). Please note, if we can not verify the certificates, either by the name(s) listed below or by hard copy, your State Equalization Guarantee (SEG) will be adjusted accordingly. Sign and upload the completed form to the File Transfer Site in the FY22 -> Membership folder.

Naming Convention: Entity Name FY22 NBCT PED-NO

1	Monkey D. Luffy	24	47	70
2	Nico Robin	25	48	71
3		26	49	72
4		27	50	73
5		28	51	74
6		29	52	75

National Board Certified Teachers

FTE:

2.00

21-22 40D Mem

2122 Membership - District Detail Report - OFFICIAL

District and State Charters only

District : ABC MUNICIPAL

No Charters

School Year: 2021-2022 Snapshot Date: 2021-10-01 - 40D

(Not applicable at EOY)



District Total	01				2	75	77				2.0	75.0	77.0
	02					101	101					101.0	101.0
	03					96	96					96.0	96.0
	04				2	86	88				2.0	86.0	88.0
	05				1	81	82				1.0	81.0	82.0
	06				2	93	95				2.0	93.0	95.0
	07				1	89	90				1.0	89.0	90.0
	08				1	77	78				1.0	77.0	78.0
	09				3	97	100			3.0		97.0	100.0
	10				1	2	112	115		1.0	2.0	112.0	115.0
	11				3	84	87			3.0		84.0	87.0
	12				6	98	104			6.0		98.0	104.0
	KF				1	88	89			1.0		88.0	89.0
	PK	3	1				4	1.5	0.5				2.0
Grand Total		3	1	10	15	1177	1206	1.5	0.5	10.0	15.0	1177.0	1204.0

Is this a Charter School? Please enter Y or N

N

Is this for the 40th Day? Please enter Y or N.

Y

Growth Units

GROWTH CALCULATION DATA

2020-21 Actual 40th MEM (Enter the District Mem EXCLUDING Charter Mem)	1,200.00
2021-22 Projected MEM (Enter the District Mem EXCLUDING Charter Mem)	1,416.50
2021-22 Actual 40th MEM (Enter the District Mem EXCLUDING Charter Mem)	1,204.00
Growth Data	
2021-22 Operating Budget Calculation	411.753
<i>Cjo-Bud takes 20-21 40-Day compared to 21-22 Mem Proj. FTE</i>	
40th Day Calculation	0.000
<i>Takes Prior Year 40th-Day and compares to Current Year 40th-Day</i>	

GROWTH UNITS

Units
0.000

PROJECTED GROWTH DID NOT REALIZE

Basic includes all active students in the school except for C Level (Level of Integration Code = 3), D Level (LoIC = 4), Special Ed, 3Y, and 4Y students.

Students in KN (Half Day Kindergarten) and students in 3Y and 4Y (by definition in Pre-K) are counted as .5 FTE. All other students are 1 FTE. If no students in the district are KN, no summary row for KN will appear for any school.

21-22 40D New Program Mem

2122 Membership - District Detail Report - OFFICIAL

District and State Charters only

District : ABC MUNICIPAL

No Charters

School Year: 2021-2022 Snapshot Date: 2021-10-01 - 40D

(Not applicable at EOY)

FAEA Totals

Only schools with an approved FAEA application will be listed and students are counted by approved grade levels under ExistingProgram or NewProgram. Grades K-6 only.

District Name	Location Name	Charter	Students Exist Pgm	Students New Pgm
ABC MUNICIPAL	ALPHABET ELEMENTARY	Non-Charter	335	0
ABC MUNICIPAL	NUMBERS ELEMENTARY	Non-Charter	40	0
ABC MUNICIPAL	SHAPES ELEMENTARY	Non-Charter	0	253
District Total			375	253

Bilingual Education FTE

Only schools with an approved Bilingual Education Program (BEP) application will be listed and students are counted under ExistingProgram or NewProgram for students in a BEP program with a Bilingual Hour specified. Grades K-12 only.

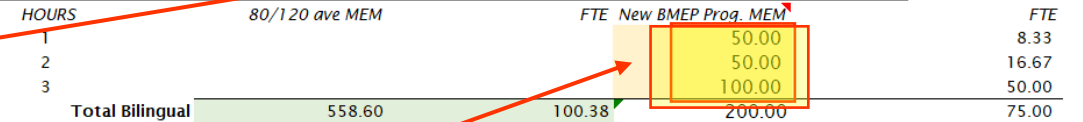
Location Name	BEP Students Existing Pgm	BEP Students New Pgm	1 Hr Exist Pgm	1 Hr New Pgm	2 Hr Exist Pgm	2 Hr New Pgm	3 Hr Exist Pgm	3 Hr New Pgm	FTE Exist Pgm	FTE New Pgm
ALPHABET ELEMENTARY	335	0	318	0	17	0	0	0	58.67	0.00
COLORS MIDDLE	90	0	78	0	12	0	0	0	17.00	0.00
NUMBERS ELEMENTARY	12	0	10	0	2	0	0	0	2.33	0.00
SHAPES ELEMENTARY	0	200	0	50	0	50	0	100	0.00	75.00
PENCIL HIGH	128	0	124	0	4	0	0	0	22.00	0.00
	565	200	530	50	35	50	0	100	100.00	75.00



Elementary Fine Arts Program (separated data entry: 80/120 average data, projection for new program (parts))



Bilingual Program (separated data entry: 80/120 average data, projection for new program (parts))



(May not total more than the no. of students in grades K-12.)
(may not total more than the no. of students in grades K-12.)

21-22 40D New Program Mem

2122 Membership - District Detail Report - OFFICIAL

District and State Charters only

District : ABC MUNICIPAL

No Charters

School Year: 2021-2022 Snapshot Date: 2021-10-01 - 40D



(Not applicable at EOY)

Extended Learning Time Program (ELTP) Totals

Only schools with an approved ELTP application will be listed and students are counted under ExistingProgram or NewProgram. Grades K-12 only.

District Name	Location Name	Charter	Students Exist Pgm	Students New Pgm
ABC MUNICIPAL	ALPHABET ELEMENTARY	Non-Charter	335	0
ABC MUNICIPAL	NUMBERS ELEMENTARY	Non-Charter	40	0
ABC MUNICIPAL	NUMBERS ELEMENTARY	Non-Charter	0	253
District Total			375	253

K-5 Plus Totals

Only schools with an approved K-5 Plus application will be listed and students are counted under ExistingProgram or NewProgram. Grades K-8 only.

District Name	Location Name	Charter	Students Exist Pgm	Students New Pgm
ABC MUNICIPAL	ALPHABET ELEMENTARY	Non-Charter	335	0
ABC MUNICIPAL	NUMBERS ELEMENTARY	Non-Charter	40	0
ABC MUNICIPAL	SHAPES ELEMENTARY	Non-Charter	0	253
District Total			375	253

Extended Learning Time Program Units (including New Program Projections)

80/120 ave MEM

373.50

New ELT Prog. MEM

253.00

K-5 Plus Program Units (including New Program Projections)

80/120 ave MEM

373.50

New K-5+ Prog. MEM

253.00

21-22 Final Unit Value

January 27, 2022

MEMORANDUM

TO: Public School Superintendents
Charter School Officials
Local School Board Presidents
Business Managers

FROM: Kurt A. Steinhaus, Secretary of Education (Designate)

RE: **2021-2022 Final Unit Value**

DocuSigned by:

Kurt Steinhaus
BCCD059DF7D24D8...

× Unit Value

\$

4,863.00

In accordance with Laws 2021, Chapter 131, the General Appropriation Act of 2021, I am establishing the final unit value for 2021-2022 school year budgets at **\$4,863.00**, an increase of \$92.30 from the initial unit value of \$4,770.70, and an increase of approximately 1.93 percent.

If you have any questions or need additional information, please contact your assigned budget analyst or Eileen Marrujo at (505) 484-8511.

Final SEG Amount

2021 HB2 Hold Harmless:

STATE EQUALIZATION GUARANTEE INCL. BASE SEG, ELTP, AND K5+ \$12,468,814.68

<i>BASE SEG FY22</i>	\$11,219,680.18		
<i>BASE SEG as of January 1, 2021</i>	\$ 11,549,236.01	HB2 hold harmless amount	\$329,555.83
<i>State Charter School Admin. Withholding</i>	\$0.00		

STATE EQUALIZATION GUARANTEE INCL. BASE SEG, ELTP, K5+, AND HB2 HOLD HARMLESS \$12,798,370.51

[Redacted]

*Subject to change after the first reporting period and the setting of the unit value.

Final SEG Amount Impact to Distribution

STATE EQUALIZATION GUARANTEE INCL. BASE SEG, ELTP, AND K5+ \$14,035,423.26

2021 HB2 Hold Harmless:

<i>BASE SEG FY22</i>	\$12,874,544.97		
<i>BASE SEG as of January 1, 2021</i>	\$ 11,549,236.01	HB2 hold harmless amount	\$0.00
<i>State Charter School Admin. Withholding</i>	\$0.00		

STATE EQUALIZATION GUARANTEE INCL. BASE SEG, ELTP, K5+, AND HB2 HOLD HARMLESS \$14,035,423.26

STATE EQUALIZATION GUARANTEE INCL. BASE SEG, ELTP, AND K5+ \$14,035,423.26

*Subject to change after the first reporting period and the setting of the unit value.

\$ 14,035,423.26 /	12	\$ 1,169,618.61 *	9	\$ 10,526,567.45
		Monthly Payment	July-March	YTD July-March

STATE EQUALIZATION GUARANTEE INCL. BASE SEG, ELTP, AND K5+ \$12,468,814.68

2021 HB2 Hold Harmless:

<i>BASE SEG FY22</i>	\$11,219,680.18		
<i>BASE SEG as of January 1, 2021</i>	\$ 11,549,236.01	HB2 hold harmless amount	\$329,555.83
<i>State Charter School Admin. Withholding</i>	\$0.00		

STATE EQUALIZATION GUARANTEE INCL. BASE SEG, ELTP, K5+, AND HB2 HOLD HARMLESS \$12,798,370.51

STATE EQUALIZATION GUARANTEE INCL. BASE SEG, ELTP, AND K5+ \$12,798,370.51

*Subject to change after the first reporting period and the setting of the unit value.

\$ 12,798,370.51 -	\$ 10,526,567.45	\$ 2,271,803.07 /	3	\$ 757,267.69
	YTD Received		April-June	Monthly Payment April-June

Helpful Resources

<https://webnew.ped.state.nm.us/bureaus/school-budget/>

<https://webnew.ped.state.nm.us/bureaus/finance-analysis/>

Sara Cordova | Director of School Budget Bureau

New Email: Sara.Cordova3@ped.nm.gov

New Mexico Public Education Department

300 Don Gaspar Ave. | Santa Fe, NM 87501

C: (505) 469-3717 | Anti-Racism/Anti-Oppression Hotline: ARAO.Hotline@ped.nm.gov

Check us out here:

[School Budget Bureau](#) | [School Budget File Transfer Site \(FTS\)](#)

[Operating Budget Management System \(OBMS\)](#)

[OpenBooks](#) | [Local Education Providers Sunshine Portal](#)



EQUITY • EXCELLENCE • RELEVANCE