

New Mexico School Boards Association Annual Convention

*Understanding, Implementing, and Supporting
New Mexico PreK*

Saturday, December 14, 2024



NEW MEXICO

Early Childhood

Education & Care Department

Agenda

- Welcome and Introductions
- Land acknowledgement
- ECECD overview
- NM PreK department roles
- NM PreK overview
- NM PreK student achievement and outcomes
- Who qualifies for NM PreK
- NM PreK program types and options
- FY25 NM PreK funding summary
- NM PreK support and monitoring
- NM PreK program standards
- 619 Coordinator
- NM PreK budget and finance
- Questions and Answers

Land Acknowledgment

Albuquerque

With gratitude to the people and communities who have cared for this land, we humbly acknowledge we are on the unceded ancestral lands of the original peoples of Tiwa Pueblo peoples, also known as Tigua, past and present. We acknowledge the Tiwa peoples and the children, families and elders who continue to live on and care for the land.



ECECD Overview



NEW MEXICO

Early Childhood

Education & Care Department

Our Commitment

Create a cohesive, equitable, and responsive prenatal-to-age 5 early childhood system that supports families, strengthens communities, and enhances child health, development, education, and well-being.





Vision and Mission of ECECD

Vision: All New Mexico families and young children are thriving

Mission: Optimize the health, development, education, and well-being of babies, toddlers, and preschoolers through high-quality, community-based and family-driven early childhood programs and services

New Mexico Early Childhood Programs and Services

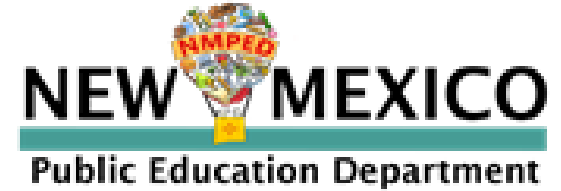
Before July 1, 2020

The logo for the New Mexico Children, Youth & Families Department (cyfd) features the lowercase letters "cyfd" in a bold, orange, sans-serif font.

New Mexico Children,
Youth & Families Department

The logo for the New Mexico Department of Health (NMDOH) features the acronym "NMDOH" in a large, bold, black, sans-serif font. Above the letters is a blue bracket-like shape, and below them is a horizontal bar with segments of red, yellow, green, and blue.

NEW MEXICO DEPARTMENT OF HEALTH

The logo for the New Mexico Public Education Department features the words "NEW MEXICO" in a bold, black, sans-serif font. A hot air balloon with a colorful pattern and the letters "NMPED" on its basket is positioned between the words. Below "NEW MEXICO" is a horizontal bar with segments of green and blue. Underneath the bar, the words "Public Education Department" are written in a smaller, black, sans-serif font.

Child Care Assistance

Child Care Regulation and Oversight

Home Visiting

Family Nutrition

NM PreK (community-based)

**Family Infant Toddler –
Part C Early Intervention**

Families FIRST

NM PreK (school-based)

The Role of ECECD in NM PreK

ECECD supports and provides guidance to community-based and school-based NM PreK programs by:

- **Overseeing** the NM PreK program, a high-quality, voluntary program accessible to all eligible families with 3- and 4-year-old children, regardless of income.
- **Supporting** school-based NM PreK through the Operating Budget Management System (OBMS).
- **Supporting** community-based PreK with an invoice-based funding structure.
- **Facilitating** the NM PreK Grant Application and Awards process to ensure equitable access to funding.





The Role of the Public Education Department (PED) in NM PreK

Local Education Agencies (LEAs) qualify to apply for NM PreK funding. Funding for NM PreK educational staff is provided by ECECD, while the NM PreK Initiative funds (*Funding Code: 27149*) are maintained in the OBMS database, managed by PED.

PED supports NM PreK by:

- **Providing** technical assistance on the OBMS application, including Nova-related issues and revenue award templating in OBMS. All other traditional OBMS roles remain with PED.
- **Ensuring** child counts do not exceed funded slots within the Nova database.

NM PreK

- Established in 2005 through the New Mexico Pre-Kindergarten Act (NMSA 1978, Section 32A-23-1, *et al.*).
- A free, voluntary program for children aged 3 and 4 funded through a grant process administered by ECECD.
- Supports and increases equitable statewide access to high quality preschool education programs through a mixed-delivery system in diverse settings.
- NM PreK is available in public schools, child care centers, licensed home providers, Head Start, colleges and universities, Bureau of Indian Education agencies, and Tribal communities.
- Promotes developmentally appropriate, play-based, hands-on early learning activities, and supports social emotional development and school readiness.

NM PreK Student Achievement

NM PreK is nationally recognized as a benchmark of quality:

- meets 9/10 benchmarks for PreK quality;
- ranks 10th in the nation for its per-child PreK funding;
- ranks 13th in the nation for 4-year-old PreK access; and
- ranks 10th in the nation for 3-year-old access.

Source: newmexico_2023_0.pdf (nieer.org)

NM PreK data shows overall progress across multiple learning domains for SY23:

- 60% of 4 year-olds reached Accomplished for 4s/First Steps for K or higher in mathematics and 51.42% for literacy

Source: Annual-Outcomes_April_16_2024_ECECD_Comms.pdf (nmeccd.org)

NM PreK Student Achievement

- National Forum on Early Childhood Policy and Programs has found that high-quality early childhood programs can yield a \$4 to \$9 return per \$1 invested.
- A 2009 study of Perry Preschool, a high-quality program for ages 3-5 developed in Michigan in the 1960s, estimated a return to society of \$7 to \$12 for each \$1 invested.





NM PreK Longitudinal Outcomes

- Increased workforce participation, especially for women
- Reduced need for K-12 special education services
- Lower rates of grade repetition in K-12
- Increased graduation rates
- More likely to enroll in Advanced Placement (AP) or International Baccalaureate (IB) courses
- Less likely to fail courses
- Less likely to be chronically absent
- More likely to graduate from high school on time
- Lower incarceration rates
- Increased economic participation

Who qualifies to be in an NM PreK program?

- **3-year-old PreK:** Children must be 3 years old by September 1 of the current school year.
- **Mixed Age PreK:** Children must be either 3 or 4 years old by September 1 of the current school year.
- **4-year-old PreK:** Children must be 4 years old by September 1 of the current school year.
- **Dual and Blended:** NM PreK offers program options for Head Start.
- **Tribal:** NM PreK offers program options for Tribal nations with flexibility for Tribal sovereignty.





Program Types

- **Half Day PreK:**
540 Instructional hours
- **Full Day PreK:**
1080 instructional hours
- **Full Day Plus PreK:**
1380 instructional hours

Program Options

- **3 year-old**
- **Mixed PreK including Head Start (3 and 4 year-old)**
- **4 year-old**

FY25 NM PreK Funding Summary



NEW MEXICO

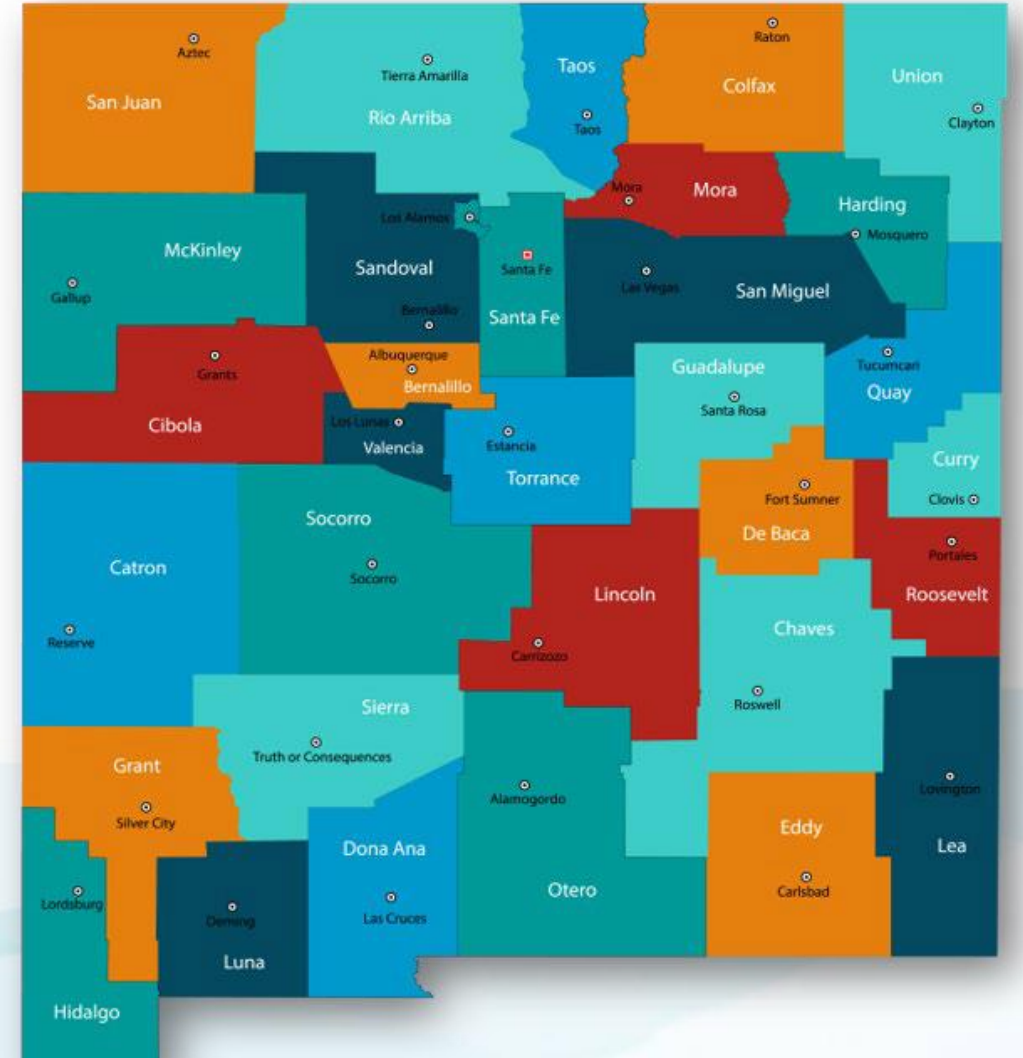
Early Childhood

Education & Care Department

Number of Children and Families Served in NM PreK

NM PreK ranks 13 nationally for quality according to the National Institute for Early Education Research (2023)

- FY25 total number of children currently served in community-based and school-based NM PreK programs:
 - **2,535** **3-year-old children**
 - **5,959** **Mixed age (including Head Start)**
 - **9,882** **4-year-old children**
 - **18,376** **Total NM PreK funded children**
- All **33** counties have NM PreK programs
- PED public school districts that **DO NOT** have NM PreK programs:
 - **Corona**
 - **House**
 - **Logan**
 - **Maxwell**
 - **Lovington**



FY25 New Mexico PreK Funding

Total New NM PreK Programs for FY25	
School-based	3 Programs
Community-based	17 Programs
Tribal	1 Program
Head Start	1 Program
Total New Programs	22

Increased NM PreK Capacity from FY24 to FY25	
Number of Funded NM PreK Slots for FY24	17,470
Number of Funded NM PreK Slots for FY25	18,376
TOTAL INCREASE in New NM PREK CAPACITY	906

Breakdown of NM PreK Slots Funded in FY25 NM PreK Funding Cycle				
Program Type	Half Day	Full Day	Full Day Plus	Totals
4Y	514	6,852	2,516	9,882
3Y	0	750	1,785	2,535
Mixed Age	12	2,441	2,638	5,091
Head Start	0	137	731	868
Total Funded Slots	526	10,180	7,670	18,376

FY25 NM PreK Support Funding

	New community-based classrooms receiving Support Funding	New school-based programs receiving Support Funding	Existing community-based programs receiving Support Funding	Existing school-based classrooms receiving Support Funding
Start-Up and Safety (\$25,000 per classroom)	25	4	27	27
Curriculum (\$5,000 per classroom one-time award)	25	4	26	27
Transportation (\$1,000 per child rate)	39	28	990	1,856
Total Support Funding	\$789,000.00	\$148,000.00	\$1,795,000.00	\$2,666,000.00



FY25 NM PreK Program Overview

	NM PreK Programs	NM PreK Slots	NM PreK Sites	NM PreK Classrooms
Community-based Programs	200	9,818	333	639
School-based Programs	86	8,558	269	477
Tribal Programs	6	413	31	31
NM PreK Program Totals	286	18,376	602	1,116

NM PreK Specialists – Regional Model of Support FY25

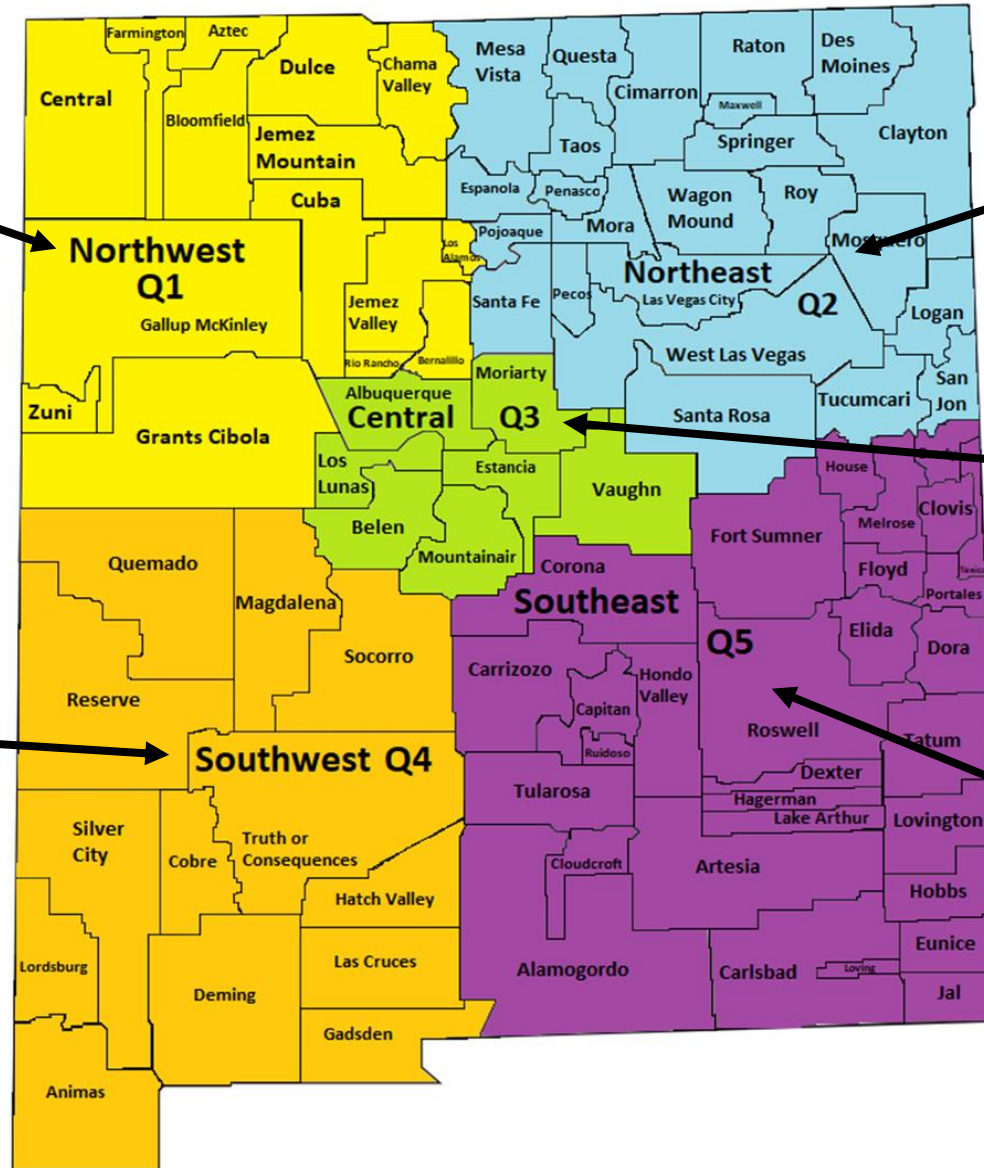
Region 1
 CB: 26
 SB: 15
 Slot Total: 3,436
 # of Specialists: 2

Region 2
 CB: 28
 SB: 22
 Slot Total: 2,036
 # of Specialists: 2

Region 3
 CB: 105
 SB: 11
 Slot Total: 6,600
 # of Specialists: 5
 (2 in SF, 3 in ABQ)

Region 4
 CB: 47
 SB: 13
 Slot Total: 3,650
 # of Specialists: 2

Region 5
 CB: 22
 SB: 25
 Slot Total: 2,654
 # of Specialists: 2



ECECD NM PreK Leadership Contacts



Sandy Trujillo-Medina

Early Care Education and Nutrition
Division Director

Email: sandy.trujillomedina@ececd.nm.gov

Ph: 505-231-3219



Consuelo Mondragon

Early Care Education and Nutrition
Deputy Director

Email: consuelo.mondragon@ececd.nm.gov

Ph: 505-469-1445

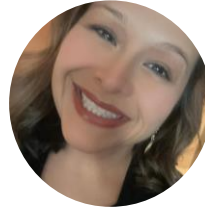


Shana Runck

Early Care Education and Nutrition
Deputy Director

Email: shana.runck@ececd.nm.gov

Ph: 505-620-3571



Casandra "CJ" Carrazco

ECECD NM PreK Bureau Chief

Email: casandra.carrazco@ececd.nm.gov

Ph: 505-709-5335



Josephine Salas

ECECD NM PreK Regional Manager

Email: josephine.salas@ececd.nm.gov

Ph: 505-500-9752



Meredith Montano

ECECD NM PreK Regional Manager

Email: meredith2.montano@ececd.nm.gov

Ph: 505-470-7025

ECECD NM PreK Specialist



Mathew Hernandez

ECECD NM PreK Specialist

Email: mathew.hernandez@ececd.nm.gov

Ph: 505-487-3964



Holly Bacon

ECECD NM PreK Specialist

Email: holly.bacon@ececd.nm.gov

Ph: 505-487-6562



Crystal Patton

ECECD NM PreK Specialist

Email: crystal.patton1@ececd.nm.gov

Ph: 505-490-7074



Pauline Baca

ECECD NM PreK Specialist

Email: pauline.baca@ececd.nm.gov

Ph: 505-709-0836

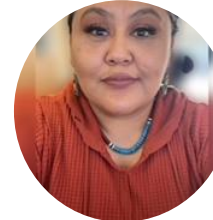


Beth Sommer

ECECD NM PreK Specialist

Email: beth.sommer@ececd.nm.gov

Ph: 505-695-4169



Lucietta Begay

ECECD NM PreK Specialist

Email: lucietta.begay@ececd.nm.gov

Ph: 505-699-3252



Regina Baca

ECECD NM PreK Specialist

Email: regina.baca@ececd.nm.gov

Ph: 505-500-9787



Marilyn Payan

ECECD NM PreK Specialist

Email: marilyn.payan@ececd.nm.gov

Ph: 505-795-5892



Kevin McCormack

ECECD NM PreK Specialist

Email: kevin.mccormack@ececd.nm.gov

Ph: 505-699-5460



Joaanha Strelow

ECECD NM PreK Specialist

Email: joanha.strelow@ececd.nm.gov

Ph: 505-365-3099

NM PreK Program Standards



NEW MEXICO

Early Childhood

Education & Care Department

NM PreK Program Standards

1. Family and Community Engagement
2. Inclusive Practices for Children with Diverse Abilities
3. Culturally and Linguistically Responsive Instruction
4. Promoting Social and Emotional Development
5. Health, Safety, and Nutrition
6. Professional Qualifications: Administrators and Educators
7. Intentional Teaching
8. Program Administration
9. Continuous Program Improvement

619 Coordinator



NEW MEXICO

Early Childhood

Education & Care Department

Duties of the 619 Coordinator

- Support interpreting federal and state regulations to support the development of policies and procedures related to the implementation and requirements of Part B-619.
- Support recommendations for policy, resource allocation, and implementation.
- Provide technical assistance and professional development related to successful implementation of Part B-619.
- Collaborate across programs, agencies, and stakeholders' group to ensure implementation of Part B-619 and other closely related programs.



Duties of the 619 Coordinator, cont.

- Conduct IDEA compliant state-level administration and activities in adherence with the Part B-619 grant and federal funding requirements.
- Work with PED's Office of Special Education (OSE) and the federal Office of Special Education Programs (OSEP) to meet the programmatic and funding requirements of the Part B-619 grant. The 619 coordinator will notify OSE if concerns arise regarding the administration and use of Part B Sections 611 or 619 grants.
- Support decisions for administrators.
- Provide guidance for braiding NM PreK and 619 funding to provide opportunities for full inclusion in the least restrictive environment with typically developing peers.

Learn more at:

- 619coordinator@ececd.nm.gov
- [Early Childhood Special Education](#)

Budget and Expenditure Guidelines

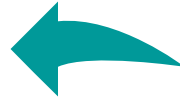


NEW MEXICO

Early Childhood

Education & Care Department

NM PreK Budget and Expenditure Guidelines



Scan the QR code to access the complete Budget and Expenditure Guidelines documents.

nmeccd.org/prek/



NEW MEXICO

Early Childhood
Education & Care Department

Early Care, Education, and Nutrition Division
NEW MEXICO PREK

NM PreK Budget Instructions and Expenditure Guidelines

The purpose of this form is to provide guidance and instruction to create the annual budget for your PreK program. Your assigned PreK Specialist is available to provide additional guidance and assistance.

The NM PreK Budget form breaks down the funding allotted from ECECD-PreK for the current fiscal year. The information listed below provides more detail for each individual Budget Line Item. Providers may purchase supplies and materials that benefit children and families being served in NM PreK programs.

Cost allocation is required for PreK programs that have one or more non-PreK funded classrooms and are sharing costs such as rent, utilities, etc. A percentage of the total cost will be allocated to PreK, the rest paid out of the program's center budget.

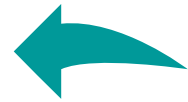
Unallowable Costs	Unallowable costs using PreK funds include, but are not limited to: the purchase or lease of land; the purchase or lease of vehicles; the purchase of buildings and structures; and major remodeling of buildings and structures.
Permitted Personnel Services and Employee Benefits Costs	<p>Salaries</p> <ul style="list-style-type: none"> Salaries for full-time, part-time, and temporary personnel are allowable, including substitutes that are hired to meet the staffing needs of the program. Use the Employee Budget Tab in the Budget Form to request payment for individual employee hourly/annual rates and salaries. Include only allowable salaries to be paid using ECECD PreK funds. If an employee works in wrap-around services after PreK services hours, those hours must be cost allocated to the program's center budget and not paid using ECECD PreK funds. If cooks, janitors, etc., are part of the above salary line item, a percentage of salaries must be cost-allocated across the program. <p>Benefits</p> <p>All employee benefits, or the portion of benefits that will be paid using ECECD PreK funds, excluding any cost-allocated benefits, are allowable. This may include staff stipends and bonuses paid throughout the year to PreK staff.</p>
Completing the Employee Budget Tab in Budget Form	<ul style="list-style-type: none"> Please enter the employee hour rate/salary from the previous and current fiscal years as indicated in the Budget Form. Please note that the hourly rate/salary for each NM PreK employee indicated in this tab will be verified by ECECD's NM PreK Specialists.



NM PreK Providers - Funding Requirements, Responsibilities and Accountability

- Submit budget into OBMS
- Submit Request for Reimbursement (RfRs) and/or invoices by the 15th of each month
- Justification must be included with invoices and RfRs
- Cost Allocation Plan

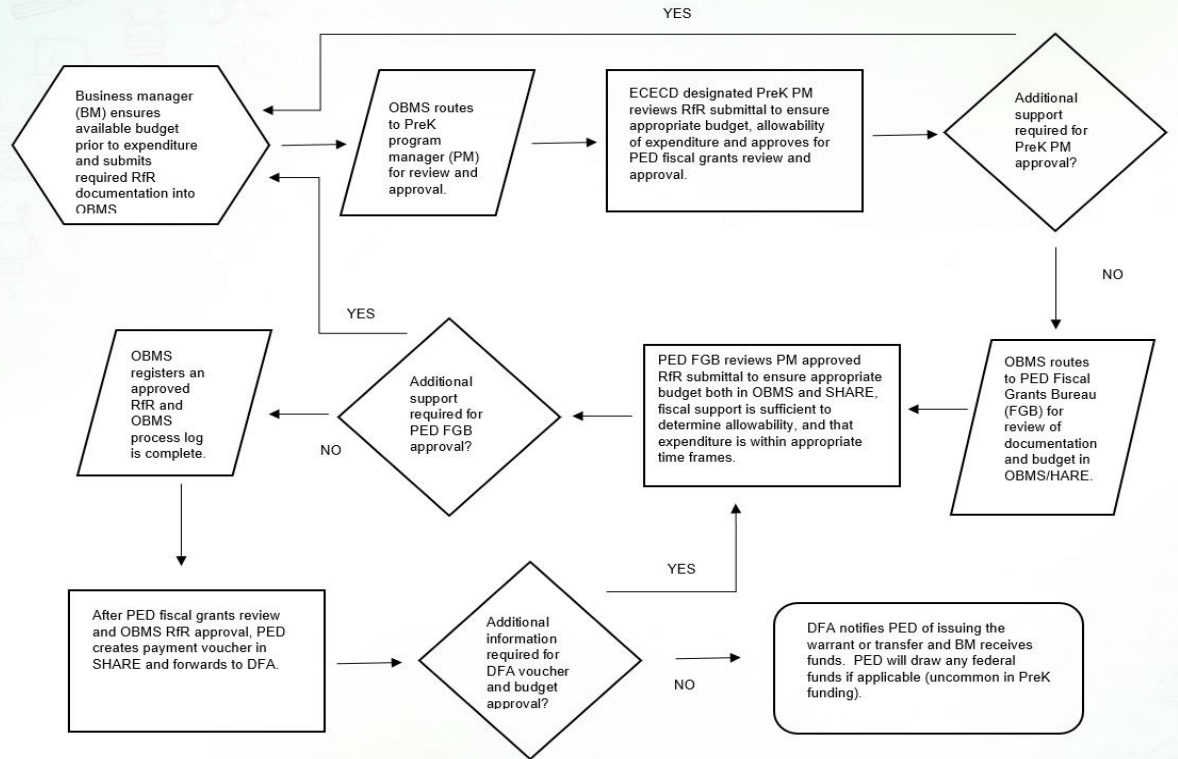
NM PreK School-Based Operating Budget Management System (OBMS) Process



Scan the QR code to access the complete OBMS process materials.

nmeccd.org/prek/

School Based OBMS Request for Reimbursement Process



Questions and Answers



NEW MEXICO

Early Childhood

Education & Care Department