



# Overview of the State Land Office/How we work for YOU!

Stephanie Garcia Richard, Commissioner of Public Lands  
February 14, 2025

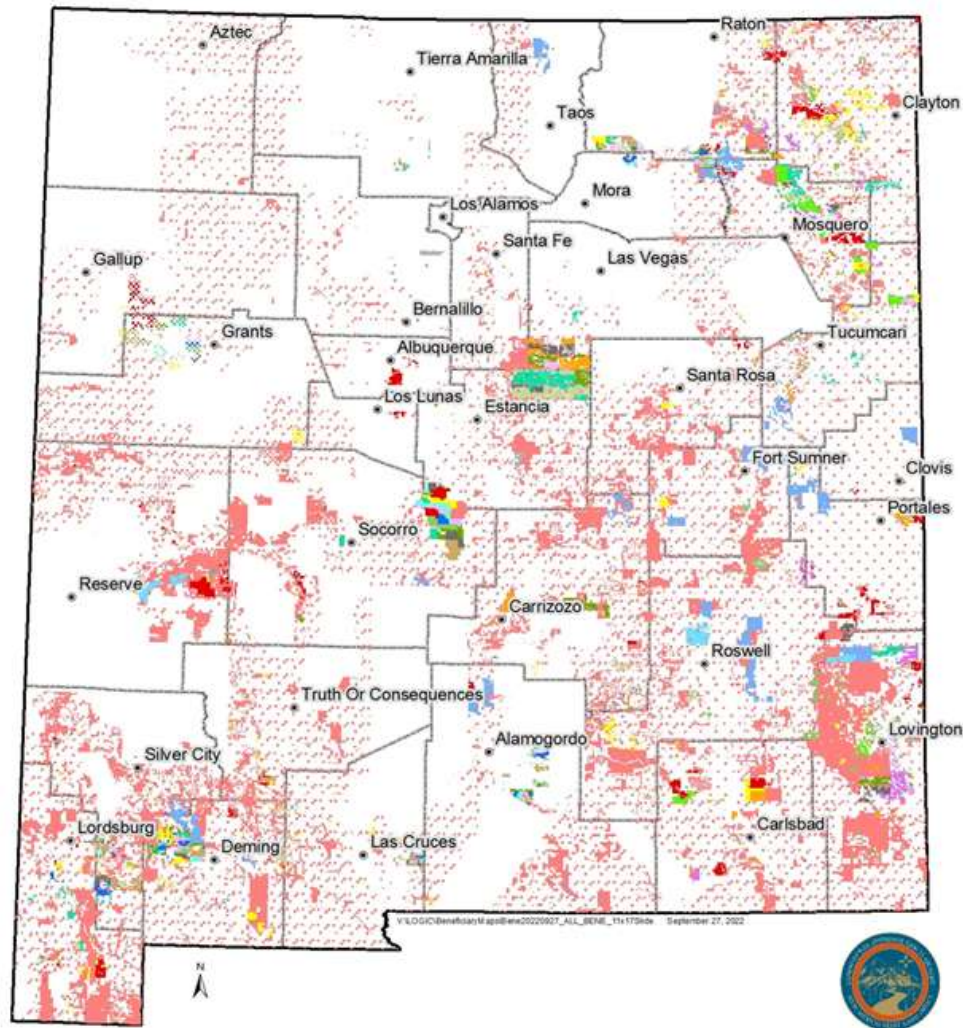
## Topics to be Covered

- How New Mexico obtained state lands
- Map of land ownership
- How we make & distribute money
- List of ALL 22 beneficiaries
- How we manage Common Schools land

# How New Mexico Obtained State Lands

- Trust lands were granted to New Mexico by Congress under the **Ferguson Act** of 1898 and the **Enabling Act** of 1910.
- The state was granted four square miles – **Sections 2, 16, 32, and 36** – in each **36 section township**. \* A section = 640 acres or one square mile
- For those lands that were already taken, the state was permitted to select other lands.
- Today, the State Land Office manages **9 million acres** of surface estate and **13 million mineral acres** held in trust for education and other beneficiaries.
- The **State Land Commissioner** is the elected official who oversees, manages and protects State Trust Lands, maximizes revenue for the beneficiaries and partners with communities to meet challenges.

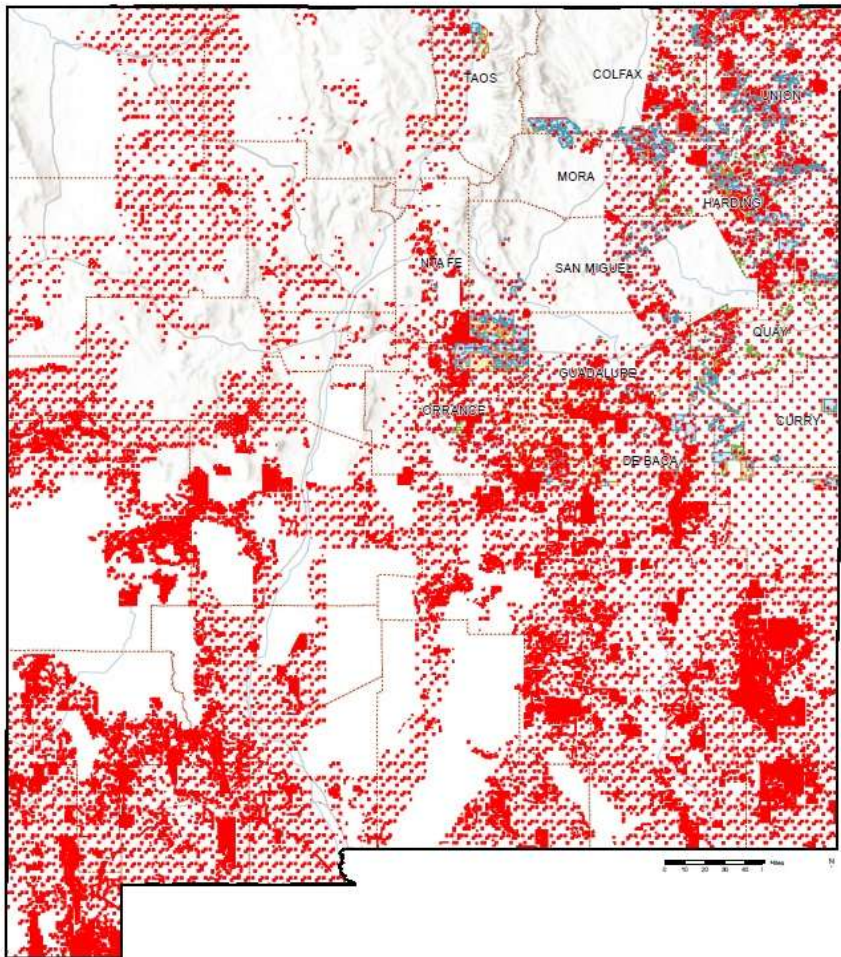
# Land Ownership By Agency



## New Mexico Land Trust Beneficiaries

- Common Schools
- Charitable, Penal and Reform
- Carrie Tingley Hospital
- Eastern New Mexico University
- Improvements to the Rio Grande
- New Mexico Miners Hospital
- New Mexico Military Institute
- New Mexico Boys School
- Northern New Mexico College
- New Mexico Highlands University
- New Mexico Institute of Mining Technology
- New Mexico Penitentiary
- New Mexico State Hospital
- New Mexico State University
- New Mexico School for the Deaf
- New Mexico Schools for the Deaf/Visually Impaired
- New Mexico School for the Visually Impaired
- Public Buildings
- University of New Mexico
- Water Reservoirs
- Western New Mexico University
- Western New Mexico University/New Mexico Highlands University

# Land Ownership Common Schools



- Beneficiary Trust Lands
- New Mexico State Trust Lands**
  - Surface Estate
  - Subsurface Estate
  - Surface and Subsurface Estates

# Revenue Flow to State Trust Land Beneficiaries



# State Lands Revenue Beneficiaries



# State Land Office – Lease Examples

- Increasing the use of State Lands for **economic development** is a top SLO priority with traditional focus on:
- Oil and gas development, **7,100** active oil and gas leases
- Agriculture, **8.8 million** acres for farming and ranching, **3,500** grazing leases
- There are more than **23,000** Rights of Way on State lands – water, oil and gas pipelines, waterlines, transmission, etc.
- **Growing and diversifying** State Lands revenue sources is a major challenge and addressed through alternatives to include:





# Beneficiary Acreage

Beneficiary	Surface Acreage	Mineral Acreage
Common Schools	6,803,453	9,767,525
University of New Mexico	253,140	344,864
Saline Lands	1,044	1,502
New Mexico State University	194,571	254,200
Western New Mexico University	77,500	118,642
New Mexico Highlands University	77,500	118,642
Northern New Mexico College	31,918	56,563
Eastern New Mexico University	82,802	104,039
New Mexico Tech	162,588	219,019
New Mexico Military Institute	135,578	160,011
New Mexico Boys School	50,814	62,331
Miners Colfax Medical Center	98,557	120,766
Behavioral Health Institute	101,242	164,024
State Penitentiary	113,509	159,695
School for the Deaf	87,079	107,022
School for the Blind	100,827	118,830
Charitable Penal & Reformatory	74,551	99,620
Water Reservoirs	341,626	470,417
Rio Grande Improvement	54,221	89,202
Public Buildings	88,846	132,112
Carrie Tingley Hospital	18,799	13,692
<b>TOTAL</b>	<b>8,950,165</b>	<b>12,682,718</b>

# So what do we do with your 9.7M acres?

- **Affordable Housing:** Luminaria and Farolito Senior Affordable Housing Apartment Communities (Albuquerque)
- **Mixed use planned communities:** Rio Rancho City Centre (Sandoval), Las Cruces Sierra Norte (Dona Ana)
- **Economic development:** Spaceport America (Sierra), Union Pacific Railroad facility (Dona Ana), Silver City Walmart (Grant)
- **Film and television:** Preacher, Midnight Texas, Better Call Saul, Roswell, Army of the Dead, Only the Brave, Briarpatch
- **Research Parks:** Sandia Science and Technology Park (Bernalillo), Prewitt (McKinley), West Mesa Industrial Park (Dona Ana)
- **Mineral Development:** 2 M acres oil and gas production in Permian Basin (Lea, Eddy)
- **Renewables:** SunZia and Western Spirit Wind projects (Torrance, Lincoln)



# Questions?

[sgarciarichard@nmslo.gov](mailto:sgarciarichard@nmslo.gov)

**505-827-5760**

**[nmstatelands.org](http://nmstatelands.org)**